

OUTDOOR
REFINEMENTS

JULIEN

OUTDOO KITCHEN

ESSENCE

CATALOG

IT'S TIME TO TAKE IT OUTSIDE

It's in our nature	4
Prepare. Feast.	6
Fuel your passion	8
Plan your project	10
Exquisite and durable	12
Brushed stainless steel finish	14
Color finish	16
A turnkey and modular kitchen	18

SELF-STANDING CABINETS

Gas grill cabinets	24
Charcoal grill cabinet	25
Sink cabinets	27
Storage cabinets	28
Appliance modules	31

WALL CABINETS

Wall storage cabinets	34
-----------------------	----

COUNTERTOPS

Countertops	38
-------------	----

ACCESSORIES

Accessories	42
-------------	----

CREATE YOUR IDEAL KITCHEN

Create for your ideal kitchen	48
-------------------------------	----

WARRANTY

Warranty	50
----------	----

INDEX

Index	51
-------	----

DISCOVER MORE COLLECTIONS

Discover more collections	54
---------------------------	----

IT'S IN OUR *NATURE*

At Julien, we've been hard at work in the kitchen since 1946. And that experience has taught us so much about perfectly fitting out professional kitchens.

Today, our enviable reputation precedes us throughout North America, where our expertise has become the indispensable ally of many internationally renowned chefs.

In 2003, we decided to offer this expertise to the residential sector. This commitment to excellence, backed by Julien's legacy, has since been extended to outdoor kitchens, giving rise to the Outdoor Refinements brand.

Our product offering for the outdoor space continues to grow! We invite you to explore our complete catalog on our website www.homerefinelements.ca



PREPARE, *FEAST*

Why choose when you can have it all? Cooking outdoors, enjoying refreshing cocktails, chatting with your guests, or even enjoying your terrace and a gourmet meal with your loved ones: That's what ESSENCE is all about.

ESSENCE outdoor kitchens were born out of a desire to focus on the simple pleasure of cooking. We wondered: what makes up the heart of the kitchen? And from there, we sought to keep only what matters.

With ESSENCE, you have all the flexibility to build the kitchen that meets your needs. Whatever your choice of configuration, our sleek and contemporary cabinets will fit your style perfectly.

Both the soft brushed stainless steel finish and the vibrant electrostatic color coating that will enfold your kitchen in elegance.

The result? A pleasant experience and exemplary quality, supported by Outdoor Refinements' guarantee of durability. Nothing less than what you need to aim for your greatest culinary creations!





ATTENTION TO DETAIL
Soft close hinges and slides for smooth handling

INGENIOUS DESIGN
With reversible cabinets

TURNKEY
Everything you need in one place: countertop, refrigerator, and charcoal grill

MODULARITY
A multitude of possible configurations

SOPHISTICATION
Aesthetically pleasing on all sides

FUEL YOUR *PASSION*

INGENIOUS DESIGN

The best of design and engineering come together here to create optimal, ergonomic cabinets tailored to your needs and capable of letting your true nature shine.

MODULARITY IN DESIGN

More than 20 cabinets and modules for limitless configurations, enough to satisfy all your needs without disrupting the harmony of your space, large or small. Choose from our islands, wall cabinets, sink cabinets or any other product in the ESSENCE collection.

ATTENTION TO DETAIL

Quality is in the little things, like a soft close drawer or a base on slides for the cylinder. This is why our ESSENCE self-standing cabinets made of high-quality stainless steel have been designed down to the last detail. Because hidden behind the elegance of every ESSENCE kitchen is the desire to make a difference and guarantee smooth and pleasant use.

PLAN YOUR PROJECT

Are you more inclined to seek the efficiency of gas cooking or the unique aroma of charcoal? Or maybe even both? Do you want to have to simply reach out and grab the refreshments your guests need to end this beautiful day? Or maybe are you looking for a custom worktop to prepare your meals without sacrificing space and design? Perhaps access to a water source is really the only thing that matters. Or even quick and direct access to all your BBQ accessories by simply holding out your arm?

You can choose the modules that meet your priorities and build a unique outdoor kitchen that fits your lifestyle. But before you get started, take a look at the elements on the right and begin to better define your needs and desires.

A more complete list of planning steps is included at the end of this document to help you design your project. If you need assistance, we invite you to contact our in-house consultants at customerservice@julien.ca ou au 1-800-461-3377.



01. EQUIPMENT

The optimal kitchen is made up of the equipment that best suits your needs as a chef: a gas or coal grill? Add-ons like a refrigerator or a sink? Choose the equipment that will give you a unique and rich outdoor cooking experience.

02. INSTALLATION TYPE

The best outdoor kitchen is one that not only suits your needs, but also your style. Choose between a self-standing installation, which keeps your kitchen tools close at hand; a wall-mounted installation for easy access to your cutlery; or a mixed installation that offers the best of both types.

03. FINISH

Our kitchens come in two finishes that will complement any environment. Embrace your unique style by choosing between the smoothness of stainless steel or the vibrancy of electrostatic color.

04. CONFIGURATION

The configuration of your outdoor kitchen will dictate the workflow, the space ergonomics, and the final dimensions of the installation. Choose between many possible configurations like a linear, parallel, an "L"- or "U"-shaped kitchen.



EXQUISITE AND DURABLE

Choose exquisiteness without sacrificing durability.

Stainless steel is our material of choice for outdoor kitchens for obvious reasons: it resists corrosion and weathering, it stands the test of time, and it is easy to maintain, just to name a few advantages.

With the ESSENCE collection, you not only benefit from the ingenious combination of our material of choice and a quality design, but also from a personalized style. Choose between the softness of our BRUSHED STAINLESS STEEL finish to showcase the natural beauty of the material or the vibrancy of our COLOR finish with an electrostatic coating designed to withstand the elements.

Either way, you'll get a timeless style that will stand the test of time.

BRUSHED STAINLESS STEEL FINISH

Opt for a timeless, modern look with the elegant brushed stainless steel finish. It will harmonize smoothly with your architecture and highlight the raw materials that surround it.





COLOR FINISH

Discover ONYX, the first color to be introduced to our ESSENCE collection. With its deep and chic look, it will bring a bold and elegant touch to your space!

ESSENCE cabinets are designed to be used on hot, humid summer evenings and cold, windy winter afternoons. That's because the electrostatic coating used by Outdoor Refinements withstands all kinds of weather, from extreme sunlight to varying humidity.

The result? A kitchen that lets your unique personality shine through without compromising durability!

A TURNKEY AND MODULAR KITCHEN

The ESSENCE collection is tailored to your every need. In addition to being available in several layouts, it can be built as a turnkey project. Keep your mind at ease as you choose the different elements that will make up your ESSENCE outdoor kitchen. The final result will never cease to please you.

Use the suggested configurations to create a linear, parallel, or an "L" and "U" shaped kitchen.



LINEAR LAYOUT

Let yourself move seamlessly between your kitchen and the rest of the outdoor space with a linear layout. It is perfect if you want to maximize a small space and ensure easy access to the work area.

LI-1



*Also available in color finish

LI-2



*Also available in color finish

“L”-SHAPED LAYOUT

The L-shaped layout offers the ultimate convenience. It can accommodate two people at the same time and still leave enough space for your guests to move around.

L-1



*Also available in color finish



L-2



*Also available in color finish

“U”-SHAPED LAYOUT

The three-sided U-shape is all about ergonomics. It allows you to distribute activities on both sides of the space without cutting off the flow of conversation. Move freely, surrounded by beautiful storage and work surfaces that maximize the space functionality.

U-1



*Also available in color finish

LAYOUT COMPOSITION

LAYOUTS	STAINLESS STEEL								GRANITE COUNTERTOP				APPLIANCES				DIMENSIONS		
	HR-ESKGR36HXXX-N (p.24)	HR-ESKGR30A-N (p.25)	HR-ESSTR18-N (p.29)	HR-ESST3D18-N (p.29)	HR-ESSB18-N (p.27)	HR-ESAP18-N (p.31)	HR-ESAPE26-N (p.32)	HR-ESSTCR18-N (p.30)	HR-ESW1830-N (p.36)	HR-ESW3630-N (p.36)	HR-ESCTGL18 (p.40)	HR-ESCTGL36 (p.40)	HR-ESCTGL42 (p.40)	HR-ESCTGL54 (p.40)	GRIL AU GAZ	HR-GRC-21-BK (p.26)		HR-RUO-15-1 (p.32)	HR-RUO-24-1 (p.32)
LI-1	■														■				72"
LI-2	■	■	■			■	■				2				■	■	■		120"
L-1	■			2				■				■	■		■				78" x 61"
L-2	■			2				■	■	■		■	■		■				96" x 79"
U-1	■	■	■	3	■			■	■	■	4		2		■	■		■	79" x 120" x 91"
	ONYX								STAINLESS STEEL COUNTERTOP				APPLIANCES				DIMENSIONS		
	HR-ESKGR36HXXX-NX (p.24)	HR-ESKGR30A-NX (p.25)	HR-ESSTR18-NX (p.29)	HR-ESST3D18-NX (p.29)	HR-ESSB18-NX (p.27)	HR-ESAP18-NX (p.31)	HR-ESAPE26-NX (p.32)	HR-ESSTCR18-NX (p.30)	HR-ESW1830-NX (p.36)	HR-ESW3630-NX (p.36)	HR-ESCTSL18 (p.40)	HR-ESCTSL36 (p.40)	HR-ESCTSL42 (p.40)	HR-ESCTSL54 (p.40)	GRIL AU GAZ	HR-GRC-21-BK (p.26)		HR-RUO-15-1 (p.32)	HR-RUO-24-1 (p.32)

*The numbers in the boxes represent the number of cabinets in the layout.



ESSENCE
OUTDOOR REFINEMENTS BY JULIEN
22

SELF- STANDING CABINETS

Our ESSENCE self-standing cabinets bring together all the essentials of a dream outdoor kitchen. Use them to fit a charcoal or gas grill, a water point, storage, and various accessories.

Because our kitchens are disarmingly easy to install, you can focus all your energy on building a space that meets your unique needs, without fear of compromising style and quality.

Pay particular attention to the colored tags. They indicate, for each product, the finishes offered.



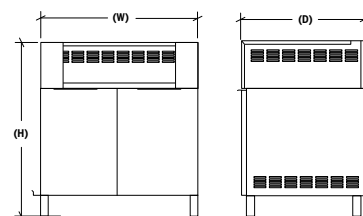
Visit our website to see the full range of self-standing cabinets and modules

GAS GRILL CABINETS

GAS GRILL CABINET

This cabinet module will draw all the attention to the heart of your outdoor kitchen, where all your skills as a master of the grill come to the fore. It combines both a base and an alcove, saving you a lot of headaches.

Make sure the model you chose has an alcove that can accommodate your grill or the grill you wish to purchase.



PRODUCT	FINISH	WIDTH (W)	HEIGHT (H)	DEPTH (D)	OPENING	COMPATIBILITY
HR-ESKGR36HCOY-N	STAINLESS STEEL	36"	36"	24"	2	COYOTE C2SL30
HR-ESKGR36HW30-N		36"	36 1/2"	25 1/2"	2	WOLF OG30
HR-ESKGR36HNP5-N		36"	36"	24"	2	NAPOLEON PRESTIGE PRO 500 (BIPRO500RB)
HR-ESKGR36HLXS-N		36"	36"	25 1/2"	2	LYNX SEDONA L500
HR-ESKGR36HJG1-N		36"	36"	24"	2	JACKSON GRILLS JSS700BI
HR-ESKGR36HCOY-NX	ONYX	36"	36"	24"	2	COYOTE C2SL30
HR-ESKGR36HW30-NX		36"	36 1/2"	25 1/2"	2	WOLF OG30
HR-ESKGR36HNP5-NX		36"	36"	24"	2	NAPOLEON PRESTIGE PRO 500 (BIPRO500RB)
HR-ESKGR36HLXS-NX		36"	36"	25 1/2"	2	LYNX SEDONA L500
HR-ESKGR36HJG1-NX		36"	36"	24"	2	JACKSON GRILLS JSS700BI



Visit our website for more details on gas grill cabinets

*Cooking appliance not included.
**ALWAYS check the manufacturer's recommended back clearance when installing against a wall.

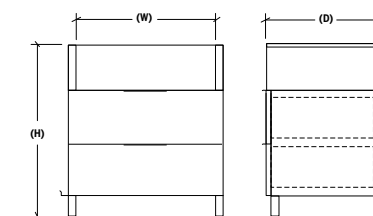
OPENING 2 : 2 Doors

CHARCOAL GRILL CABINETS

CHARCOAL GRILL CABINET

This charcoal cooking cabinet alcove was designed to accommodate a wide selection of the leading brands of charcoal grills, such as our Outdoor Refinements grill or the Kamado Joe Classic II and the Big Green Egg L.

Make sure the model you chose has an alcove that can accommodate your grill or the grills you wish to purchase.



PRODUCT	FINISH	WIDTH (W)	HEIGHT (H)	DEPTH (D)	OPENING
HR-ESKGRC30A-N	STAINLESS STEEL	30"	36"	24"	2D
HR-ESKGRC30A-NX	ONYX	30"	36"	24"	2D

COMPATIBLE CHARCOAL GRILL MODELS

KAMADO JOE CLASSIC II
BIG GREEN EGG L
CHARBON GRILL HR-GRC21-BK
and other grills of similar dimensions



Visit our website for more details on our charcoal grill cabinets and their dimensions

*Cooking appliance not included.
**ALWAYS check the manufacturer's recommended back clearance when installing against a wall.

OPENING 2D : 2 Drawers

CHARCOAL GRILL

Take your cooking experience to the next level with this durable, easy-to-clean black charcoal grill. It fits perfectly into the ESSENCE charcoal grill cabinet and comes with many accessories. An all-in-one solution for easy shopping.



HR-GRC21-BK

	WIDTH	COMPATIBLE CABINET
HR-GRC21-BK	21 5/8"	HR-ESKGRC30A



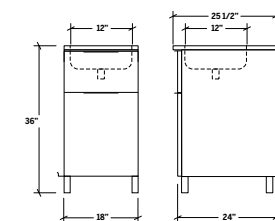
*Visit our website for more details on our Outdoor Refinements charcoal grill

SINK CABINET



SINK CABINET

Use this cabinet to equip your kitchen with a sink integrated to a countertop, a retractable shower faucet, and additional storage space. An indispensable ally for preparing meals or doing the messiest tasks in the garden. Its water feature will quickly become a must-have on hot summer days.



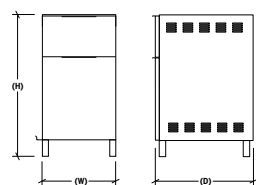
PRODUCT	FINISH	WIDTH (W)	HEIGHT (H)	DEPTH (D)	OPENING
HR-ESSB18-N	STAINLESS STEEL	18"	36"	24"	1R
HR-ESSB18-NX	ONYX	18"	36"	24"	1R

OPENING 1R : 1 Reversible door

STORAGE CABINETS

STORAGE CABINETS - CYLINDER

Not planning to install a direct gas line? This storage cabinet will keep your gas cylinder easily accessible. You can use its top drawer to store any essential kitchen tools and utensils that need to stay clean and dry. The perfect utility unit for your outdoor kitchen space, an addition you won't be able to live without*.



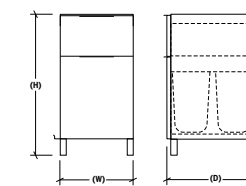
PRODUCT	FINISH	WIDTH (W)	HEIGHT (H)	DEPTH (D)	OPENING
HR-ESST18H-N	STAINLESS STEEL	18"	34 5/8"	24"	1D - 1R
HR-ESST18H-NX	ONYX	18"	34 5/8"	24"	1D - 1R

*Cylinder base accessory available. See page 46

OPENING 1D : 1 Drawer
1R : 1 Reversible door

STORAGE CABINET - RECYCLING

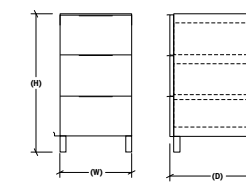
This handy cabinet with drawers keeps your recycling scraps and waste out of sight. You won't be able to live without this incredible addition to your outdoor kitchen space!



PRODUCT	FINISH	WIDTH (W)	HEIGHT (H)	DEPTH (D)	OPENING
HR-ESSTTR18-N	STAINLESS STEEL	18"	34 5/8"	24"	2D
HR-ESSTTR18-NX	ONYX	18"	34 5/8"	24"	2D

STORAGE CABINET WITH DRAWERS

Have you ever heard of a kitchen with too much storage? Probably not. With this cabinet, you add three drawers at once to help you keep the essentials close at hand. This way, you can free your mind and let your culinary creativity flow.



PRODUCT	FINISH	WIDTH (W)	HEIGHT (H)	DEPTH (D)	OPENING
HR-ESST3D18-N	STAINLESS STEEL	18"	34 5/8"	24"	3D
HR-ESST3D18-NX	ONYX	18"	34 5/8"	24"	3D

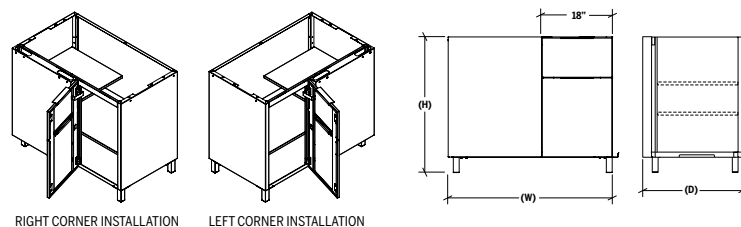
*Several utility accessories are available. Take a moment to review our wide selection on page 42 and imagine the possibilities.

OPENING 2D : 2 Drawers
3D : 3 Drawers

APPLIANCE MODULES

REVERSIBLE CORNER STORAGE CABINET

The corner cabinet is the ideal extension for L- or U-shaped kitchens. It allows you to add an appliance without sacrificing storage space. You can install this universal corner unit with the door opening to the right or left, depending on your own tastes and exterior design.

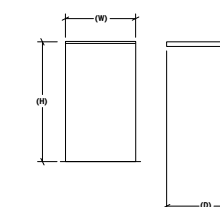


PRODUCT	FINISH	WIDTH (W)	HEIGHT (H)	DEPTH (D)	OPENING
HR-ESSTCR18-N	STAINLESS STEEL	35"	25 1/2"	42"	1
HR-ESSTCR18-NX	ONYX	35"	25 1/2"	42"	1

BACK PANEL FOR APPLIANCES*

This panel will hide the back of your appliances while providing support for the work surface. Your kitchen will look stunning from all angles.

Fits 15" or 24" outdoor refrigerators or wine coolers.



PRODUCT	FINISH	WIDTH (W)	HEIGHT (H)	DEPTH (D)	APPLIANCE WIDTH
HR-ESAP18-N	STAINLESS STEEL	18"	30 3/4"	2"	15"
HR-ESAP26-N		26"	30 3/4"	2"	24"
HR-ESAP18-NX	ONYX	18"	30 3/4"	2"	15"
HR-ESAP26-NX		26"	30 3/4"	2"	24"

*Several utility accessories are available. Take a moment to review our wide selection on page 42 and imagine the possibilities.

OPENING 1: 1 Door

*Appliance not included. See page 32 for more information on our Outdoor Refinements refrigerators.

END PANEL FOR APPLIANCES*

This support, both aesthetic and functional, accommodates a refrigerator installed at the end of the configuration. The little details are what makes it so special.

Fits 15" or 24" outdoor refrigerators or wine coolers.



PRODUCT	FINISH	WIDTH (W)	HEIGHT (H)	DEPTH (D)	APPLIANCE WIDTH
HR-ESAPE-N	STAINLESS STEEL	18"	34 5/8"	24"	15"
HR-ESAPE26-N		26"	34 5/8"	24"	24"
HR-ESAPE-NX	ONYX	18"	34 5/8"	24"	15"
HR-ESAPE26-NX		26"	34 5/8"	24"	24"

REFRIGERATORS

Our outdoor refrigerators and wine coolers will always be on hand when you need refreshments to watch the sunset or to entertain a group of friends during an impromptu feast. Compatible with our appliance modules, they will keep all your food and drinks cool. An all-in-one solution for easy shopping.



	CABINET WIDTH	APPLIANCES WIDTH
HR-RUO-15-1	18"	15"
HR-RUO-24-1	27"	24"
HR-RUO-24-2	27"	24"



*Visit our website to choose from our Outdoor Refinements refrigerators (only available in Canada).

*Appliances not included





WALL CABINETS

Overhead storage is a brilliant way to optimize your outdoor kitchen. No need to run inside anymore to retrieve your cups, cutlery or spices. It also offers the advantage of keeping certain dangerous items out of reach of children.

Pay particular attention to the colored tags. They indicate, for each product, the finishes offered.



Visit our website to see the full range
of our wall cabinets

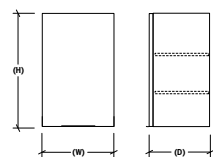
WALL STORAGE CABINETS

WALL CABINETS

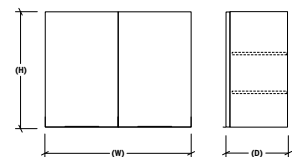
ESSENCE wall cabinets are ideal for storing your dishes, utensils or spices. Choose between a single door (which can be installed with a left or right opening), a double door or a retractable door and intelligently maximize your storage space.



HR-ESW1830-N



HR-ESW3630-N



HR-ESW3615L-N



PRODUCT	FINISH	WIDTH (W)	HEIGHT (H)	DEPTH (D)	OPENING
HR-ESW1830-N	STAINLESS STEEL	18"	30"	15"	1R
HR-ESW3630-N		36"	30"	15"	2
HR-ESW3615L-N		36"	15"	15"	1
HR-ESW1830-NX	ONYX	18"	30"	15"	1R
HR-ESW3630-NX		36"	30"	15"	2
HR-ESW3615L-NX		36"	15"	15"	1

OPENING 1: 1 Door 1R: 1 Reversible door
2: 2 Doors





COUNTERTOPS

The workspace is often a forgotten part of the kitchen design process. But we know a well-thought-out countertop makes all the difference. So, why not discover the power of cooking in a place that is designed for you?

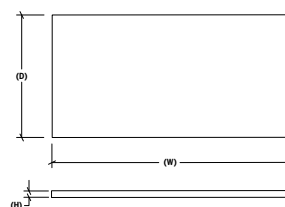
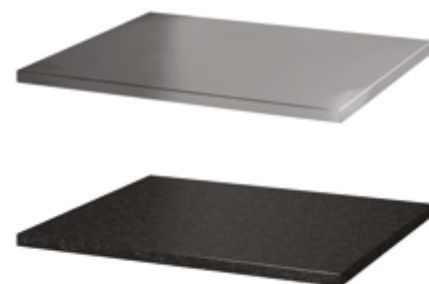


Visit our website to see the full range of countertops.

COUNTERTOPS

COUNTERTOPS

For the ultimate kitchen experience, choose a countertop that is durable, properly sized, and easy to maintain. Our black cambrian granite and orbital stainless steel countertops meet all of these criteria, plus they have a timeless look that will stand the test of time. In fact, the orbital finish of the stainless steel helps hide the inevitable scratches, making cleaning easier.



PRODUCT	FINISH	WIDTH (W)	HEIGHT (H)	DEPTH (D)
HR-ESCTSL18	ORBITAL STAINLESS STEEL	18"	1 1/4"	25 1/2"
HR-ESCTSL26		26"	1 1/4"	25 1/2"
HR-ESCTSL36		36"	1 1/4"	25 1/2"
HR-ESCTSL42		42"	1 1/4"	25 1/2"
HR-ESCTSL44		44"	1 1/4"	25 1/2"
HR-ESCTSL54		54"	1 1/4"	25 1/2"
HR-ESCTGL18	BLACK GRANITE	18"	1 1/4"	25 1/2"
HR-ESCTGL26		26"	1 1/4"	25 1/2"
HR-ESCTGL36		36"	1 1/4"	25 1/2"
HR-ESCTGL42		42"	1 1/4"	25 1/2"
HR-ESCTGL44		44"	1 1/4"	25 1/2"
HR-ESCTGL54		54"	1 1/4"	25 1/2"





ESSENCE

OUTDOOR REFINEMENTS BY JULIEN

42

ACCESSORIES

Outdoor Refinements accessories offer more than just a stylish finishing touch. Handcrafted with the same care than our cabinets, they will quickly become essential allies for your outdoor kitchen. They are utilitarian and resistant products that add a touch of finish and sophistication to your decor.

Designed by experts in commercial cooking

Thoughtfully designed to perfectly match your ESSENCE kitchen

Design inspired by 75 years of commercial kitchen manufacturing

A wide selection of accessories with many features

43

ACCESSORIES

The ESSENCE collection would not be complete without its line of accessories to enhance your outdoor kitchen experience. Choose from bottle holders, multifunction trays, knife blocks, colanders, cutting boards, and more. Take the time to study our wide selection and open up a world of possibilities.

KNIFE BLOCKS

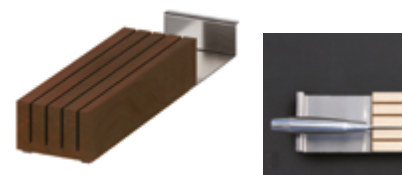
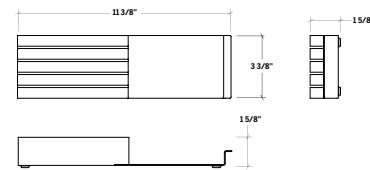
One knife block, two models, suitable for table knives or chef's knives.

Your blades are protected by the maple or walnut divider while the handle rests on an elegant brushed stainless steel holder.

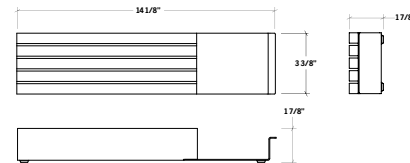
	WOOD	KNIFE TYPE
HROK-ACC-805000	M	Table
HROK-ACC-805016	W	Table
HROK-ACC-805001	M	Chef
HROK-ACC-805017	W	Chef



HROK-ACC-805000



HROK-ACC-805017



WOOD M: Maple
W: Walnut

MULTIFUNCTION TRAYS

Optimize your drawer space with these stainless steel trays that can hold utensils, towels, and various tools.

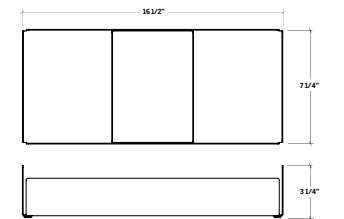
Our trays are easy to transport. So don't keep them hidden! Pull them out of your drawers to carry with style your favorite accessories to your guests.

The trays come with dividers that can be used to separate the items they contain or to create separate storage spaces directly in the drawers.

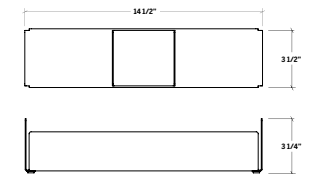
	TYPE	DIMENSIONS
HROK-ACC-805002	Long	3 1/2" x 16 1/2"
HROK-ACC-805003	Long	7" x 16 1/2"
HROK-ACC-805004	Short	3 1/2" x 14 1/2"



HROK-ACC-805003

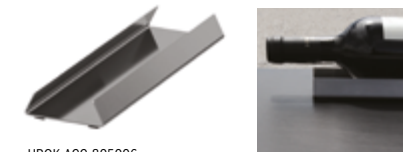


HROK-ACC-805004

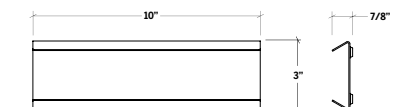


BOTTLE HOLDER

This stainless steel bottle holder allows you to place and stabilize bottles of different diameters horizontally.



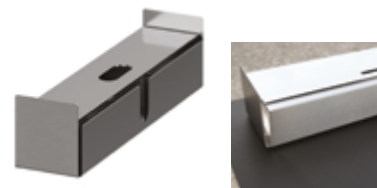
HROK-ACC-805006



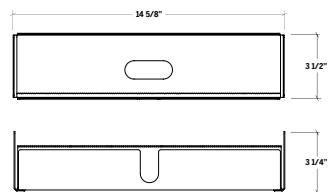
HROK-ACC-805006

WRAPPING PAPER DISPENSER

This stainless steel dispenser is perfect for dispensing and cutting your aluminum foil or plastic film roll. It fits perfectly in the drawers of our different modules, horizontally, making it easy to use.



HROK-ACC-805005



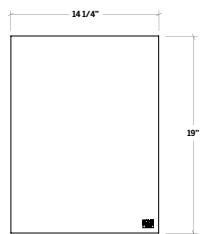
HROK-ACC-805005

LEATHER DRAWER MAT

This vegetable-tanned leather mat protects the surface and reduces metallic sounds. It also adds elegance to your kitchen, easily fitting 18" drawers or any other surface.



HROK-ACC-805018

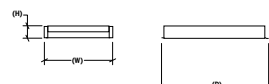


DIMENSIONS

HROK-ACC-805018	11 1/4" x 19"
HROK-ACC-805008	14 1/4" x 19"

GAS TANK SLIDING SHELF

Take out your cylinder with one finger thanks to this sliding rack. A very nice addition that will make your life easier.*



	WIDTH (W)	HEIGHT (H)	DEPTH (D)	COMPATIBLE CABINET
HR-ESACC-N	14"	2 1/2"	21 3/4"	HR-ESST18H

*Cylinder not included



CREATE YOUR *IDEAL* *KITCHEN*

Are you ready to get started on your outdoor kitchen project? Here are some practical tips for gathering the information you need to plan and succeed.

01.

DESIGN BASICS

Before you start planning your next outdoor kitchen, think about style and functionality and determine the right type of construction for your needs:

- Self-standing cabinets
- Wall cabinets
- A mix of both

Since our solutions are completely modular, you can create the configuration that best suits you by integrating many features. Depending on the space available and the desired work surface, choose whether your configuration will be:

- Linear
- Parallel
- L-shaped
- U-shaped

Finally, the finish will define the tone of your outdoor kitchen. Choose if you want a finish:

- Brushed Stainless Steel
- Electrostatique color coating

02.

SPACE LAYOUT AND DIMENSIONS

The starting point for a successful outdoor kitchen project is its location. Start by assessing the **distance between your outdoor kitchen and your home** to help you target the storage and specialty cabinets needed to keep your essentials close at hand.

Make sure you also **provide enough space and clearance for your needs**. If the space is covered, you will need enough ventilation for efficient cooking and to ensure the evacuation of gases and smoke. Also, make sure you have a stable and level floor.

When **taking measurements** of the target space, always consider the following:

- The overall dimensions of the available space (length, depth, and height)
- Location of existing architectural elements (walls and low walls, beams, windows, moldings, etc.)
- Positioning of current and future services (electricity, plumbing, gas)
- The ground slope
- Nearby materials to keep cooking appliances away from combustible materials

03.

INTEGRATION OF COOKING EQUIPMENT AND OTHER APPLIANCES

The focal point of any outdoor kitchen is without a doubt the grill. The ESSENCE self-standing collection offers a multitude of cabinets that can accommodate the most popular gas and charcoal grills on the market, or even a refrigerator or a dishwasher. To choose **the right cabinets** for your appliances, make sure you have the following information on hand:

- Overall dimensions of the appliance, closed and open, to plan the space required when in use
- Clearances required by the manufacturer between the cooking surface and adjacent surfaces (combustible and non-combustible)
- Opening dimensions required to integrate the cooking equipment into the cabinet
- Thickness of the countertop on which the built-in gas grill will be placed
- The model numbers and technical data sheets of the equipment to be integrated
- The addition of the cylinder cabinet if the grill is not powered by a gas line
- Clearance required to open and close doors, drawers, and access

WARRANTY

Generalities

Outdoor Refinements may at its sole option, repair, replace or make appropriate adjustments to the Product or components proven to be defective in order to restore to good working condition.

In no event, even if Product or components are found to be defective, shall Outdoor Refinements' liability exceed the price paid for the Product. Outdoor Refinements reserves the right to inspect the installation prior to the replacement or repair of the Product or its component parts. Outdoor Refinements may at its discretion require pictures prior to analyzing a claim. This limited warranty is null and void if the Product or components have been repaired, altered or modified other than by Outdoor Refinements or under its supervision.

This limited warranty replaces any and all other warranty, expressed or implied, including implied warranties of merchantability or fitness for a particular purpose. Laws governing product warranties may vary from one state or province to another. This warranty is not intended to contravene to the public order and shall not be so interpreted. This limited warranty extends only to the original owner/end user in residential applications and is not transferable to any subsequent purchaser. In the event of a warranty claim, original proof of purchase (sales receipt) will be required. Shipping and handling costs (for returning the product or components for repairs or to replace product or components) are not covered under this limited warranty. Also excluded from this limited warranty is any labor, workmanship or other costs incurred in connection with the Product or components removal, repairs, replacement, adjustment, or installation and any incidental or consequential damages.

ATTENTION > Warranty will be null and void for any damage resulting from installation not respecting the instructions and Outdoor Refinements will not be held responsible for any costs incurred. In the event of a limited warranty claim, original proof of purchase will be required – save original sales receipt.

Outdoor kitchen cabinets

Outdoor Refinements offers a LIFETIME limited warranty against any manufacturing or materials defect on all outdoor kitchen stainless steel products, provided that the Client, or the final user, makes a normal, residential and reasonable use of the products. Outdoor Refinements do not warrant defects or damage caused by improper installation.

Outdoor Refinements offers a TWO (2) YEAR limited warranty against any manufacturing or materials defect on all hardware products (slides, hinges, etc.), provided that the Client, or the final user, makes a normal, residential and reasonable use of the products.

Outdoor Refinements offers ONE (1) YEAR limited warranty against any manufacturing or materials defect on all electronic or lighting components, options and accessories provided that the Client, or the final user, makes a normal, residential and reasonable use of the products.

Outdoor Refinements offers a prorated TEN (10) YEAR limited warranty against peeling, cracking and chalking of the coating on painted surfaces following the original date of purchase. During the first THREE (3) years of the life of the product, Outdoor Refinements will cover one hundred percent (100%) of the cost of the product warranty (excluding any labor). Beginning on the third anniversary of the installation of the painted product, Outdoor Refinements reduces its warranty coverage gradually until the end of the coverage period. The table below illustrates the warranty coverage:

YEAR(S)	% COVERED BY OUTDOOR REFINEMENTS
0-3	100
3-5	50
5-10	25

EXCLUSIONS : This warranty does not cover the following :

- Chemical or natural surface corrosion (namely because of salt water)
- Color change or fading
- Scuffs or scratches
- Damage caused by misuse, abnormal or abusive use or negligence
- Damage caused during transportation
- Damages caused by environmental factors
- Commercial use of the products
- Defect or damage caused by an improper installation
- Bumps or deformation caused by the impact of any object
- Normal wear
- Installation, maintenance or care related problems

If you believe that you have a warranty claim or for more information about the warranty on our products, visit our website homerefinements.ca

INDEX

PRODUCT	DESCRIPTION	PKG WEIGHT (lbs)	PKG. DIMENSION (In)			
			W	H	D	
HR-ESKGR36HCOY-N	HR-ESKGR36HCOY-NX	Gas Grill Cabinet for COYOTE C2SL30, 36" x 36" x 24"	105	40	37	27
HR-ESKGR36HW30-N	HR-ESKGR36HW30-NX	Gas Grill Base Cabinet for WOLF OG30, 36" x 36 1/2" x 25 1/2"	105	40	38	29
HR-ESKGR36HNP5-N	HR-ESKGR36HNP5-NX	Gas Grill Base Cabinet for NAPOLEON PRESTIGE PRO 500, 36" x 36" x 24"	105	40	37	27
HR-ESKGR36HLXS-N	HR-ESKGR36HLXS-NX	Gas Grill Base Cabinet for LYNX SEDONA L500, 36" x 36" x 25 1/2"	105	40	37	29
HR-ESKGR36HJG1-N	HR-ESKGR36HJG1-NX	Gas Grill Base Cabinet for JACKSON GRILLS JSS700Bi, 36" x 36" x 24"	105	40	37	27
HR-ESKGRC30A-N	HR-ESKGRC30A-NX	Drawer Charcoal Grill Cabinet, 30" x 36" x 24"	105	34	37	27
HR-ESSB18-N	HR-ESSB18-NX	Sink Cabinet, 18" x 36" x 24"	72	22	37	27
HR-ESST18H-N	HR-ESST18H-NX	Tank Storage Cabinet, Reversible Door, 18" x 34 5/8" x 24"	85	22	36	27
HR-ESSTTR18-N	HR-ESSTTR18-NX	Recycle Cabinet, 18" x 34 5/8" x 24"	85	22	36	27
HR-ESST3D18-N	HR-ESST3D18-NX	Drawer Storage Cabinet, 18" x 34 5/8" x 24"	100	22	36	27
HR-ESSTCR18-N	HR-ESSTCR18-NX	Single Door Corner Storage Cabinet, 35" x 25 1/2" x 42"	133	45 1/8	36	27
HR-ESAP18-N	HR-ESAP18-NX	Back Panel for 15" appliance, 18" x 30 3/4" x 2"	12	24	35	2
HR-ESAP26-N	HR-ESAP26-NX	Back Panel for 24" appliance, 26" x 30 3/4" x 2"	15	30	35	2 1/2
HR-ESAPE-N	HR-ESAPE-NX	End panel for 15" appliance, 18" x 34 3/8" x 24"	23	24	35	4
HR-ESAPE26-N	HR-ESAPE26-NX	End panel for 24" appliance, 26" x 34 3/8" x 24"	28	32	36	4
HR-ESW1830-N	HR-ESW1830-NX	Reversible Single Door Cabinet, 18" x 30" x 15"	65	20 3/8	33 1/2	17 7/8
HR-ESW3630-N	HR-ESW3630-NX	Double Door Cabinet, 36" x 30" x 15"	108	38 3/8	33 1/2	17 7/8
HR-ESW3615L-N	HR-ESW3615L-NX	Lift Door Cabinet, 36" x 15" x 15"	65	38 7/8	17	17 7/8

COUNTERTOP

PRODUCT	DESCRIPTION	PKG WEIGHT (lbs)	PKG. DIMENSION (In)		
			W	H	D
HR-ESCTSL18	Top stainless steel orbital 18 x 25 1/2 x 11/4"	14	18 1/4	26	11/2
HR-ESCTSL26	Top stainless steel orbital 26" x 25 1/2 x 11/4"	19	26 1/4	26	11/2
HR-ESCTSL36	Top stainless steel orbital 36" x 25 1/2 x 11/4"	26	36 1/4	26	11/2
HR-ESCTSL42	Top stainless steel orbital 42" x 25 1/2 x 11/4"	30	42 1/4	26	11/2
HR-ESCTSL44	Top stainless steel orbital 44" x 25 1/2 x 11/4"	32	44 1/4	26	11/2
HR-ESCTSL54	Top stainless steel orbital 54" x 25 1/2 x 11/4"	38	54 1/4	26	11/2

INDEX

PRODUCT	DESCRIPTION	PKG WEIGHT (lbs)	PKG. DIMENSION (In)		
			W	H	D
COUNTERTOP					
GRANITE					
HR-ESCTGL18	Top black granite 18 x 25 1/2 x 1 1/4"	57	18	26	4
HR-ESCTGL26	Top black granite 26" x 25 1/2 x 1 1/4"	115	36	36	48
HR-ESCTGL36	Top black granite 36" x 25 1/2 x 1 1/4"	147	24	36	48
HR-ESCTGL42	Top black granite 42" x 25 1/2 x 1 1/4"	190	24	36	48
HR-ESCTGL44	Top black granite 44" x 25 1/2 x 1 1/4"	218	24	36	48
HR-ESCTGL54	Top black granite 54" x 25 1/2 x 1 1/4"	235	40	36	60
ACCESSORIES					
			W	H	D
HROK-ACC-805000	Table Knives Block, Maple	0,8	4	16	4
HROK-ACC-805016	Table Knives Block, Walnut	0,8	4	16	4
HROK-ACC-805001	Chef Knives Block, Maple	1,2	4	16	4
HROK-ACC-805017	Chef Knives Block, Walnut	1,3	4	16	4
HROK-ACC-805002	Long Multifunction Tray, 3 1/2 x 16 1/2 x 3"	2,7	9 1/4	18 1/2	5
HROK-ACC-805003	Long Multifunction Tray, 7 1/4 x 16 1/2 x 3"	4,1	9 1/4	18 1/2	5
HROK-ACC-805004	Short Multifunction Tray, 3 1/2 x 14 1/2 x 3"	2,2	4	16	4
HROK-ACC-805005	Wrapping Paper Dispenser, 3 1/2 x 14 1/2 x 3"	3,4	9 1/4	18 1/2	5
HROK-ACC-805006	Bottle Holder, 3 x 10"	0,6	4	16	4
HROK-ACC-805018	Drawer Mat 15" - 11 1/4 x 19"	0,5	4	16	4
HROK-ACC-805008	Drawer Mat 18" - 14 1/4 x 19"	0,5	4	16	4
HR-ESACC-N	Gas tank sliding shelf	10	3	18	22

DISCOVER MORE COLLECTIONS

The DISTINCTION Collection

Experience elegance in a world of possibilities with the DISTINCTION outdoor kitchens. The collection was born out of a desire to bring the sophistication and functionality of the indoor kitchen to the outdoors – to help you aim for the culinary experience you've always dreamed of.

Our flagship collection is also a guarantee of quality and excellence, with soft-closing slides and hinges, soundproof doors, and ambient lighting. Resistant to time and nature, DISTINCTION adapts to all regions, even where the elements wreak havoc.

Let yourself be inspired and imagine the unforgettable moments that await you in your outdoor living space.



Visit our website
to learn more.



IT'S TIME TO TAKE IT OUTSIDE

OUTDOOR
REFINEMENTS

JULIEN

1 866 901-5624
customerservice@julien.ca

955, rue Lachance, Québec (Québec)
Canada G1P 2H3

homerefinelements.ca

Product: HROK-ESSENCE-CATALOG-2023-EN
A-2023-01
996313729