

OUTDOOR  
REFINEMENTS

JULIEN



OUTDOOR KITCHEN

*DISTINCTION*

CATALOG

## *IT'S TIME TO TAKE IT OUTSIDE*

It's in our nature	4
Sophistication without compromise	8
Plan your dream space	10
For a harmonious environment	12
Embody your style	14
Superior stainless steel	16

### **SELF-STANDING CABINETS**

À la Carte	24
Cooking	28
Sinks	33
Storage	38
Appliances	46
Ambiance	48
Finish	50

### **BUILT-IN CABINETS**

Storage cabinets	60
Access doors	63

### **ACCESSOIRES**

Accessories	66
-------------	----

### **DESIGN YOUR DREAM SPACE**

Design your dream space	72
-------------------------	----

### **WARRANTY**

Warranty	76
----------	----

### **INDEX**

Index	78
-------	----

### **DISCOVER MORE COLLECTIONS**

Discover more collections	82
---------------------------	----

# IT'S IN OUR *NATURE*

At Julien, we've been hard at work in the kitchen since 1946. And that experience has taught us so much about perfectly fitting out professional kitchens.

Today, our enviable reputation precedes us throughout North America, where our expertise has become the indispensable ally of many internationally renowned chefs.

In 2003, we decided to offer this expertise to the residential sector. This commitment to excellence, backed by Julien's legacy, has since been extended to outdoor kitchens, giving rise to the Outdoor Refinements brand.

Our product offering for the outdoor space continues to grow! We invite you to explore our complete catalog on our website [www.homerefinelements.ca](http://www.homerefinelements.ca)







## *SOPHISTICATION* WITHOUT COMPROMISE

The DISTINCTION outdoor kitchen collection was born from a desire to bring the indoor kitchen's sophistication and functionality to the outdoors. Soft-closing hardware, sealed cabinetry, soundproof doors, and ambiance lighting are just a few features of our flagship collection.

All this sophistication resides in a thoughtful design, a rigorously executed production, and choice materials. Our expertise in stainless steel processing and our experience in the professional kitchen industry are reflected in this collection of kitchen cabinets that are as easy to install as they are enjoyable to use.

DISTINCTION is a collection that stands the test of time and nature. It is perfect for the most rigorous weather, where the elements can wreak havoc.

Let yourself be inspired and imagine the unforgettable moments that await you in your outdoor living space.

# PLAN

## YOUR DREAM SPACE

The DISTINCTION collection offers a multitude of possibilities and options designed to help you create your dream space. Before you start designing your perfect outdoor kitchen, pay special attention to the points mentioned here.

A more complete list of planning steps is included at the end of this document to help you design your project. If you need assistance, we invite you to contact our in-house consultants at [customerservice@julien.ca](mailto:customerservice@julien.ca) or 1-800-461-3377.

### 01. EQUIPMENT

Select the equipment that will be integrated into the kitchen. This includes deciding whether you want a charcoal or gas grill and considering additions, such as a refrigerator or sink.

### 02. INSTALLATION TYPES

Choose self-standing or built-in cabinets, or even a combination of both, for a design that best suits your environment and needs.

### 03. STYLE

LINE or PURE, two styles to help your outdoor kitchen blend into your environment or to help you assert your unique personality.

### 04. STAINLESS STEEL

Decide which grade of stainless steel is best for your location. Grade 304 is more suitable for inland areas, while 316L is ideal for coastal regions.

### 05. CONFIGURATION

Choose a configuration that fits your space and workflow: linear, parallel, in a "L" or "U" shape.



SELF-STANDING Cabinets



BUILT-IN Cabinets

## FOR A *HARMONIOUS* ENVIRONMENT

The DISTINCTION collection is characterized by two categories of cabinets whose main difference lies in their installation method: SELF-STANDING or BUILT-IN.

Self-standing cabinets are placed on an existing structure. They offer you a greater choice of positioning, as you only need to find a stable and level floor. The cabinets also come fully assembled with adjustable legs. Position them, fasten them, and voilà!

The built-in cabinets and access doors are designed to integrate perfectly with an existing structure. Their stainless steel finish will add a touch of class to the stone, stucco, or tiles of your deck.

Consider combining the two types of cabinets to give your space a unique look that will surely impress your guests.

See our complete offering of self-standing cabinets and modules on page 18 and our built-in cabinets on page 54.

# *EMBODY* YOUR STYLE

The DISTINCTION collection comes in two equally elegant styles, LINE and PURE, available for both freestanding and built-in cabinets.

LINE features a fully integrated handle that blends seamlessly into the cabinet door or drawer front. With its straight lines, it offers a distinguished style to your outdoor kitchen.

The finesse of PURE is matched only by its functionality. Sleek cabinet doors, topped with a slim stainless steel handle, ensure easy handling in the busiest of times.

Both styles are available for all cabinets, regardless of installation type, size, or function.



LINE Style



PURE Style





## *SUPERIOR* STAINLESS STEEL

Some materials just seem to have it all. Durable, corrosion resistant, easy to maintain, and let's not forget the most important attribute of all, beautiful. All things considered, stainless steel is the ideal material for outdoor use.

As a standard, all our cabinets and components are made of 304-grade stainless steel. If you are considering installing your kitchen in a coastal area, we also offer 316L stainless steel. This grade is more resistant to salt air and will help ensure the longevity of your installation.

To order your DISTINCTION kitchen in 316L stainless steel, see the À La Carte options, page 24.



# *SELF- STANDING CABINETS*

The self-standing cabinets and modules of the DISTINCTION collection have been designed down to the last detail. Take advantage of its many features and options to create an outdoor living space that exceeds your expectations.

Weather-resistant construction that keeps the insects out

Unique double back designed to conceal piping and electrical wiring

Invisible slides and soft-closing hardware

Exclusive À La Carte options



Visit our website to learn more about our range of self-standing cabinets.

# MOTHER NATURE *APPROVED*

The elements can wreak havoc on an outdoor kitchen, which is why the proper design and materials are crucial. DISTINCTION self-standing cabinets are equipped with **WEATHER-RESISTANT RUBBER SEALS** that keep out the elements and insects. Each cabinet has been designed to limit the number and size of openings in order to avoid intruders. This will make you feel confident leaving your kitchen essentials outside.

Our unique **DOUBLE BACK** construction efficiently separates storage space from utilities, protecting what is precious in a clean and dry environment.

Would you like to be able to keep certain items out of reach? You can choose to add a **LOCK** to self-standing cabinets. Learn more about this À La Carte option and many others on page 24.





## *DETAILS* THAT MAKE ALL THE DIFFERENCE

True perfection is found at every level, from the thoughtful design of our specialty cabinets to the use of top-quality components. In the *DISTINCTION* collection, quality hides everywhere, even where you can't see it – behind the doors that open and close without a sound and the drawers that slip smoothly on hidden glides.

All *LINE* and *PURE* doors and drawer fronts have a double-shell construction made entirely of stainless steel, making them even more robust and resistant. They also have soundproofing pads inside the shell to reduce sound when used.





## OPTIONS À LA CARTE

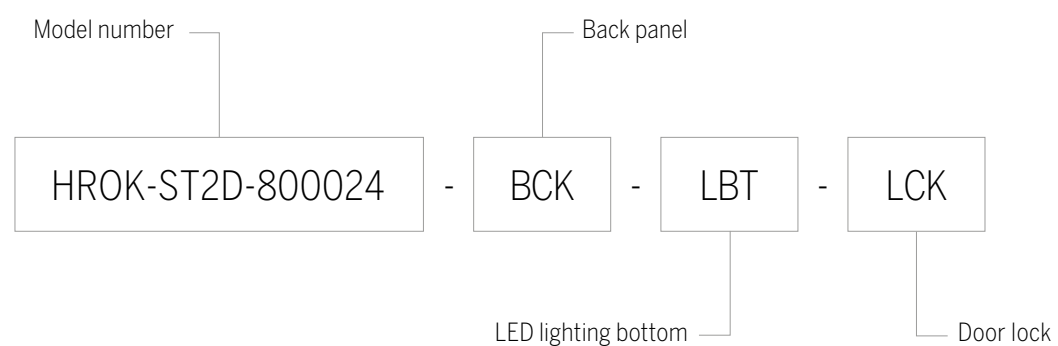
Not all outdoor spaces are created equal. So having À La Carte options for your DISTINCTION self-standing cabinets is crucial for designing the optimal outdoor kitchen. We are experts in adapting designs to any environment and bringing you as close to nature as possible. Simply follow the instructions below to order your À La Carte options.

*01.*

Select the cabinet or module model number

*02.*

Add the option codes after the model, using hyphens to separate them



Simply use that code to place your order. Do not hesitate to contact our consultants for more information on how to order the À La Carte options.



**316L STAINLESS STEEL CONSTRUCTION**

For those who live in coastal areas, choose 316L grade stainless steel. More resistant to corrosion, it will help your cabinets survive even under the assault of a saline wind.

CODE

316



**BACK PANEL**

This aesthetic back panel is designed to fit behind a cabinet. It covers the unique double-back construction and makes your island beautiful from all angles.

CODE

BCK LINÉAIRE

BC COIN



**LED LIGHTING BOTTOM**

A kitchen atmosphere is greatly influenced by the lighting in which it bathes. With our À La Carte Options, you can add an encapsulated LED system to your design that fits right at the bottom of your cabinets. Choose the quantity and where you want them for a unique ambience.

CODE

LBT



**DOOR/DRAWER LOCK**

This discreet lock keeps your cooking essentials safe from the wind or animals seeking shelter.

CODE

LCK

# GAS COOKING



## GAS GRILL CABINETS

These airy cabinets were designed to accommodate a wide selection of the leading brands of grill or gas burner. Use them to showcase the heart of your kitchen, where all the talents of the grill master are revealed.

### GAS GRILL CABINET - BBQ

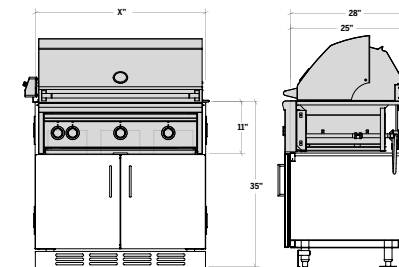
When choosing your cabinet model, make sure that the minimum dimensions required by the manufacturer of your grill are compatible with the cabinet opening. Also, ensure you know your grill and countertop model specifications, as they are required to adjust the control panel fillers.

The grill cabinet must always be supported on the right and left sides. For an installation at the end of a layout, a support module is required (p.52). Also, if the grill is not connected to a gaz line, you must add a tank cabinet (p. 41) to store your propane tank.



HROK-GR-800016

PURE STYLE	LINE STYLE	CABINET WIDTH (X)	OPENING
HROK-GR-800078	HROK-GR-800278	30"	2P
HROK-GR-800015	HROK-GR-800215	36"	2P
HROK-GR-800016	HROK-GR-800216	42"	2P
HROK-GR-800017	HROK-GR-800217	48"	2P
HROK-GR-800074	HROK-GR-800274	54"	3P



Visit our website  
for more details  
on gas grill cabinets

\*Cooking appliance not included.  
\*\*IMPORTANT : check the manufacturer's recommended back clearance when installing against a wall.

OPENING 2D : 2 doors  
3D : 3 doors

# GAS BURNER CABINETS

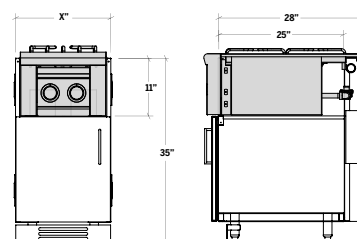
## GAS GRILL CABINET - BURNER

This single-door cabinet has been designed to accommodate a gas burner grill. When choosing your cupboard model, ensure that the minimum dimensions required by the manufacturer of your grill are compatible with the cabinet's opening. Also, ensure you know your grill and countertop model specifications, as they are required to adjust the control panel fillers.

The grill cabinet must always be supported on the right and left sides. For an installed at the end of a layout, a support module is required (p.52). Also, if the grill is not connected to a gas line, you must add a tank cabinet (p. 41) to store your propane tank.



HROK-GR-800059



PURE STYLE	LINE STYLE	CABINET WIDTH (X)	OPENING
HROK-GR-800059	HROK-GR-800259	15"	1L
HROK-GR-800060	HROK-GR-800260	15"	1R
HROK-GR-800061	HROK-GR-800261	18"	1L
HROK-GR-800062	HROK-GR-800262	18"	1R
HROK-GR-800075	HROK-GR-800275	24"	1L
HROK-GR-800076	HROK-GR-800276	24"	1R



Visit our website for more details on gas grill cabinets

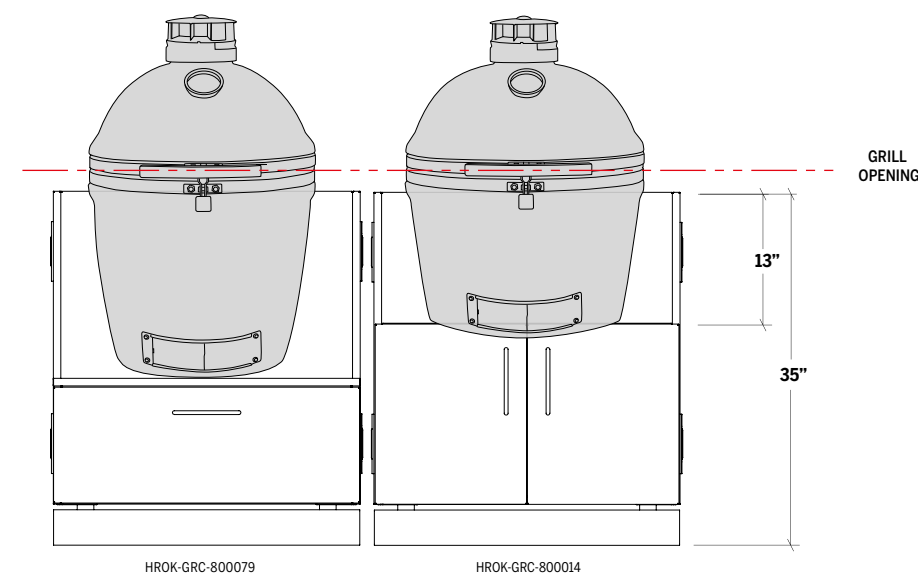
\*Cooking appliance not included.  
\*\*IMPORTANT: check the manufacturer's recommended back clearance when installing against a wall.

OPENING 1L : Left hinges  
1R : Right hinges

# CHARCOAL GRILL CABINETS

Come play with fire with this ingenious, and yet refined, system. These cabinets let you cook with taste and safety, with the alcove assembled at the base perfectly framing your chosen grill.

Our two cabinets are offered in different heights to accommodate the grill of your choice from a large number of 15" to 22" grills available on the market. The drawer cabinet fits grills such as the Kamado Joe Classic III, while the door cabinet fits most standard grills such as the Kamado Joe Classic II or the Big Large Green Egg.



HROK-GRC-800079

HROK-GRC-800014

## CHARCOAL GRILL

This premium black charcoal grill integrates perfectly with the **HROK-GRC-800014** cabinet, giving you an all-in-one solution that simplifies your shopping.



WIDTH  
HR-GRC21-BK 21 5/8"



\*Visit our website for more details on our Outdoor Refinements charcoal grill. (Available in Canada only)

\*Cooking appliance not included.  
\*\*IMPORTANT: Check the compatibility of your grill with the chosen surface height.  
\*\*\*IMPORTANT: Check the manufacturer's recommended rear clearance when installing against a wall.

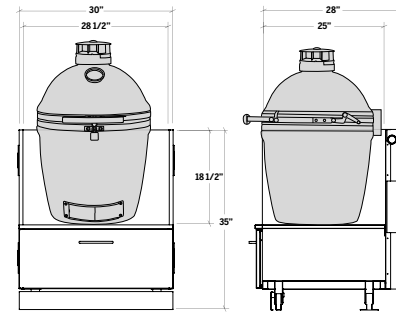


**CHARCOAL GRILL CABINET - WITH DRAWER**

This specialized cabinet can accommodate a Kamado Joe Classic III\*\* 15-22" ceramic charcoal grill. The storage drawer allows you to store and protect all your cooking essentials, including charcoal.



HROK-GRC-800079



PURE STYLE	LINE STYLE	CABINET WIDTH	OPENING	COMPATIBILITY
HROK-GRC-800079	HROK-GRC-800279	30"	1D	KAMADO JOE CLASSIC III

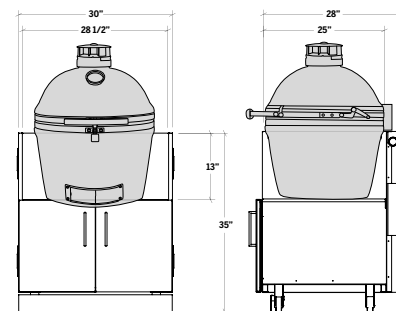
**CHARCOAL GRILL CABINET - WITH DOORS**

This specialized storage cabinet stores and protects all your cooking essentials, including charcoal.

The door cabinet can accommodate a kamado-style charcoal grill in sizes equivalent to the following models: Kamado Joe Classic II, Big Large Green Egg, Coyote Asado, and more.



HROK-GRC-800014



PURE STYLE	LINE STYLE	CABINET WIDTH	OPENING	COMPATIBILITY
HROK-GRC-800014	HROK-GRC-800214	30"	2D	KAMADO JOE CLASSIC III BIG GREEN EGG LARGE

\*Cooking appliance not included.  
 \*\*IMPORTANT: Check the compatibility of your grill with the chosen surface height.  
 \*\*\*IMPORTANT: Check the manufacturer's recommended rear clearance when installing against a wall.

OPENING 1D: 1 drawer  
 2D: 2 doors

# SINKS



# SINK CABINETS

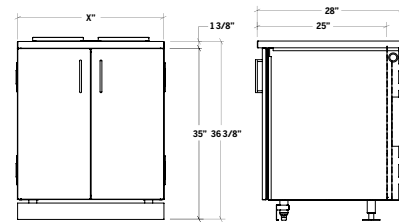
These sink cabinets are a turnkey solution that will meet your outdoor kitchen needs and provide optimal storage space. They are perfect for meal preparation, social interaction, cocktail prep, or any other special need. They help you create your ideal space.

## SMARTSTATION SINK CABINET

This two-door cabinet is really a multi-functional workstation with a sink and several built-in accessories. The two-tiered sink from the SmartStation collection optimizes the space. The set also comes with Canada-made walnut or maple accessories, as well as a sink grid to protect the bottom.



HROK-SSSS-800009

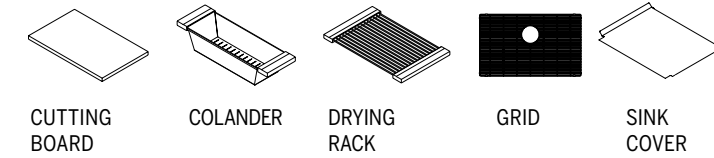


PURE STYLE	LINE STYLE	WOOD	BOWL DIMENSIONS	CABINET WIDTH (X)	OPENING
HROK-SSSM-800001	HROK-SSSM-800201	W	12"x18"x10"	18"	1L
HROK-SSSM-800002	HROK-SSSM-800202	W	12"x18"x10"	18"	1R
HROK-SSSM-800003	HROK-SSSM-800203	M	12"x18"x10"	18"	1L
HROK-SSSM-800004	HROK-SSSM-800204	M	12"x18"x10"	18"	1R
HROK-SSSM-800063	HROK-SSSM-800263	W	24"x18"x10"	30"	2D
HROK-SSSM-800064	HROK-SSSM-800264	M	24"x18"x10"	30"	2D
HROK-SSSM-800009	HROK-SSSM-800209	W	30"x18"x10"	36"	2D
HROK-SSSM-800010	HROK-SSSM-800210	M	30"x18"x10"	36"	2D

**OPENING** 1L : Left hinges 2D : 2 doors  
1R : Right hinges

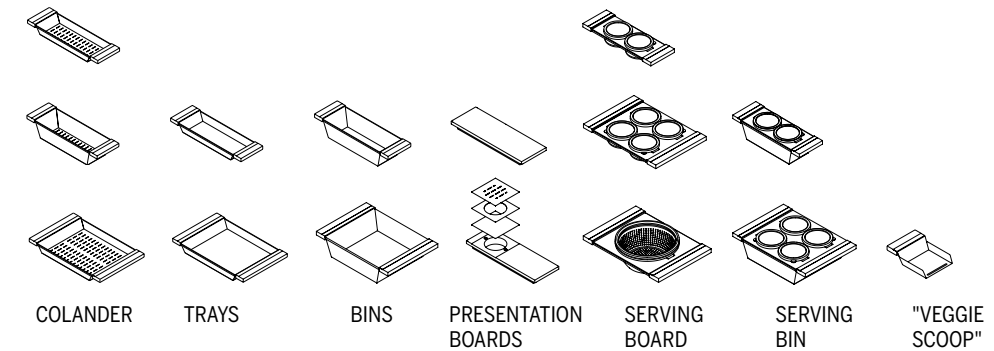
## SMARTSTATION SINK ACCESSORIES

All SmartStation sink cabinets include: cutting board, colander, drying rack, grid, and sink cover.



## OPTIONAL SINK ACCESSORIES

Here are the optional accessories available to help you complete your SmartStation sink.



Visit our website to see the details and specifications of our sink accessories.

**SOCIALCORNER SINK CABINET**

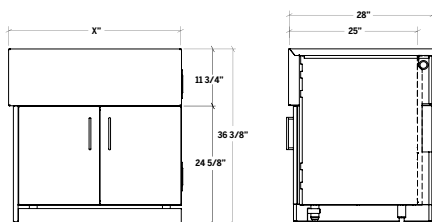
The SocialCorner is born out of a unique collaboration with renowned designer Matthew Quinn. It redefines the way we work at the sink. With its integrated, double-sided apron sink, SocialCorner is perfect for your busy outdoor parties.

\*The cabinet should be used at the end of the configuration.



HROK-SSSC-800012

PURE STYLE	LINE STYLE	CORNER	BOWL DIMENSIONS	CABINET WIDTH (X)	OPENING
HROK-SSSC-800065	HROK-SSSC-800265	L	29"x18"x10"	30"	2D
HROK-SSSC-800066	HROK-SSSC-800266	R	29"x18"x10"	30"	2D
HROK-SSSC-800011	HROK-SSSC-800211	L	35"x18"x10"	36"	2D
HROK-SSSC-800012	HROK-SSSC-800212	R	35"x18"x10"	36"	2D



**BAR SINK CABINET**

This bar cabinet with an integrated sink and drain board is genuinely unique. Inspired by professional workspaces, it was designed to keep your tools and beverage preparation products within easy reach. Bottles, ingredients and utensils can be placed on the fitted drain board and in the provided receptacles. The insulated sink can be used as an ice tray to keep your drinks cold.

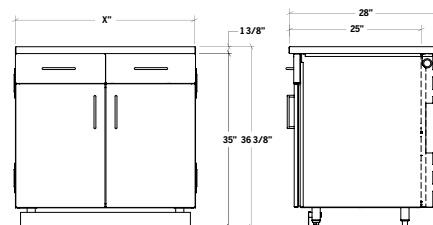


HROK-SSJ7-800007



HROK-SSBR-800077

PURE STYLE	LINE STYLE	BOWL DIMENSIONS	CABINET WIDTH (X)	OPENING
HROK-SSJ7-800007	HROK-SSJ7-800207	12"x16"x10"	36"	2D - 1D
HROK-SSBR-800077	HROK-SSBR-800277	12"x16"x10"	36"	2D



OPENING 2D : 2 doors  
1D : 1 drawer

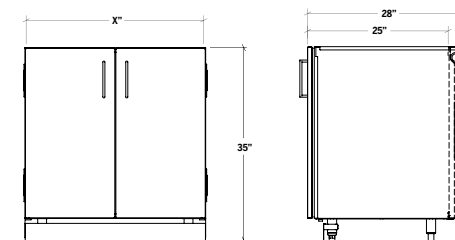
**SINK BASE CABINET**

This sink base cabinet can accommodate the sink and countertop surface of your choice.



HROK-SB-800069

PURE STYLE	LINE STYLE	CABINET WIDTH (X)	OPENING
HROK-SB-800057	HROK-SB-800257	15"	1L
HROK-SB-800058	HROK-SB-800258	15"	1R
HROK-SB-800005	HROK-SB-800205	18"	1L
HROK-SB-800006	HROK-SB-800206	18"	1R
HROK-SB-800067	HROK-SB-800267	24"	1L
HROK-SB-800068	HROK-SB-800268	24"	1R
HROK-SB-800069	HROK-SB-800269	30"	2D
HROK-SB-800013	HROK-SB-800213	36"	2D



\*Sink not included.  
Visit our website to see our selection of Home Refinements standard sink.

OPENING 1L : Left hinges 2D : 2 doors  
1R : Right hinges

# STORAGE



## STORAGE CABINETS

Our storage and specialty cabinets are designed to store everything you need in the right place (propane tanks, serving tables, recycling bins, etc.). This way, you won't need to go back and forth between indoors and outdoors. In addition to making your outdoor kitchen functional and genuinely yours, these cabinets are made of commercial-grade stainless steel and are weather resistant. This way, your storage is always protected from outside aggression and small intruders.

### STORAGE CABINET WITH DOOR(S)

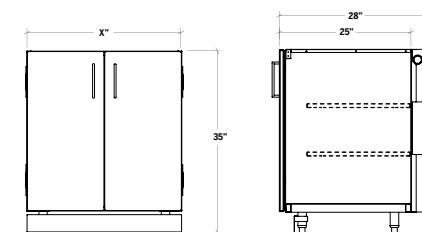
These cabinets allow you to store your cooking, preparation, and serving tools all in one place.

Some cabinet sizes can be enhanced with various accessories to make them even more specialized. Take a moment to review our wide selection of utility accessories on page 66 and imagine the possibilities.

PURE STYLE	LINE STYLE	CABINET WIDTH (X)	OPENING
HROK-ST1D-800055	HROK-ST1D-800255	15"	1L
HROK-ST1D-800056	HROK-ST1D-800256	15"	1R
HROK-ST1D-800018	HROK-ST1D-800218	18"	1L
HROK-ST1D-800019	HROK-ST1D-800219	18"	1R
HROK-ST1D-800071	HROK-ST1D-800271	24"	1L
HROK-ST1D-800072	HROK-ST1D-800272	24"	1R
HROK-ST2D-800054	HROK-ST2D-800254	30"	2D
HROK-ST2D-800024	HROK-ST2D-800224	36"	2D



HROK-ST2D-800054



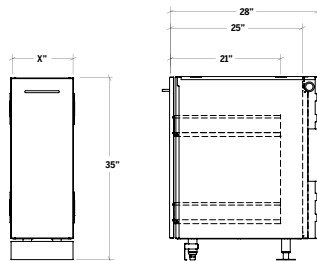
\*Several utility accessories are available. Take a moment to review our wide selection on page 65 and imagine the possibilities.

**OPENING** 1L : Left hinges 2D : 2 doors  
1R : Right hinges

### STORAGE CABINET - CHEF

Sliding cabinets are ideal for storing spices and BBQ tools. They feature two storage compartments on top of each other. By installing it near the cooking station, you'll have everything within reach\*.

PURE STYLE	LINE STYLE	CABINET WIDTH (X)	OPENING
HROK-STCC-800030	HROK-STCC-800230	12"	C
HROK-STCC-800082	HROK-STCC-800282	18"	C

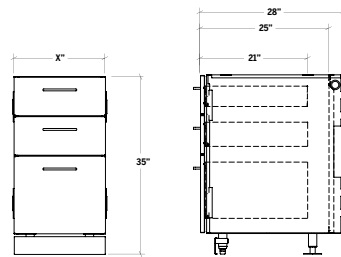


HROK-STCC-800030

### DRAWER STORAGE CABINET

Drawer storage units divide the storage space conveniently for larger cooking utensils and tools. In addition, these drawers feature heavy-duty hidden glides and a shock-absorbing closure that is slow, quiet, and smooth\*.

PURE STYLE	LINE STYLE	CABINET WIDTH (X)	OPENING
HROK-ST3D-800053	HROK-ST3D-800253	15"	3D
HROK-ST3D-800020	HROK-ST3D-800220	18"	3D

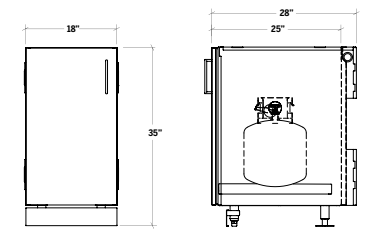


HROK-ST3D-800053

### STORAGE CABINET - PROPANE TANK

When a direct gas line cannot be installed, this vented cabinet, installed next to the grill cabinet, keeps the cylinder easily accessible on a sliding support platform\*.

PURE STYLE	LINE STYLE	CABINET WIDTH (X)	OPENING
HROK-STTK-800033	HROK-STTK-800233	18"	1L
HROK-STTK-800034	HROK-STTK-800234	18"	1R

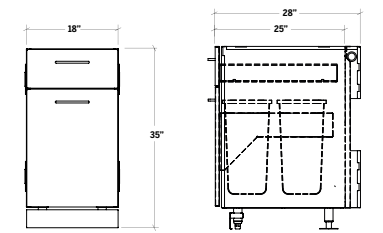


HROK-STTK-800033

### STORAGE CABINET - RECYCLING

This pull-out cabinet protects your recycling containers and garbage can. It can also accommodate a top drawer to store various bags and accessories\*.

PURE STYLE	LINE STYLE	CABINET WIDTH (X)	OPENING
HROK-STTR-800035	HROK-STTR-800235	18"	1D
HROK-STTR-800080	HROK-STTR-800280	18"	2D



HROK-STTR-800080

\*Several utility accessories are available. Take a moment to review our wide selection on page 65 and imagine the possibilities.

**OPENING C** : sliding CHEF  
**3D** : 3 drawers

\*Several utility accessories are available. Take a moment to review our wide selection on page 65 and imagine the possibilities.

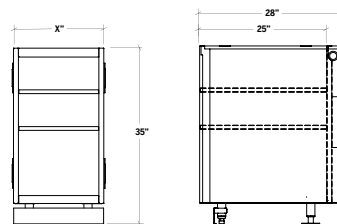
**OPENING 1L** : Left hinges **1D** : 1 drawer  
**1R** : Right hinges **2D** : 2 drawers

### OPEN STORAGE CABINET - FRONT

This open storage space with shelves will allow you to keep your tools within easy reach. It can be installed between two cabinets to host your most beautiful accessories and make your outdoor installation look great\*.



HROK-STOM-800021



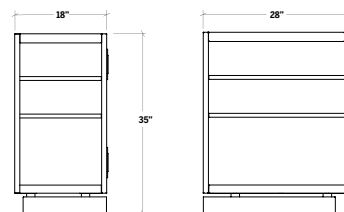
	CABINET WIDTH (X)	OPENING
HROK-STOM-800021	18"	FRONT
HROK-STOM-800025	36"	FRONT

### OPEN STORAGE CABINET - FRONT AND SIDE

This open storage cabinet with shelves will allow you to keep your tools close at hand. Since being open on the front and on the side, this storage cabinet must be installed at the end of a layout. Use it to display your most beautiful accessories and make your outdoor installation look great\*.



HROK-STOC-800022

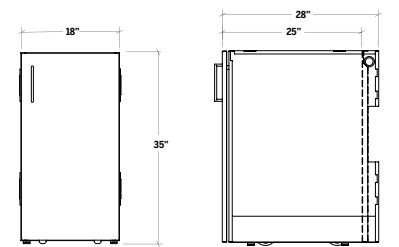


	CABINET WIDTH (X)	OPENING
HROK-STOC-800022	18"	LEFT
HROK-STOC-800023	18"	RIGHT

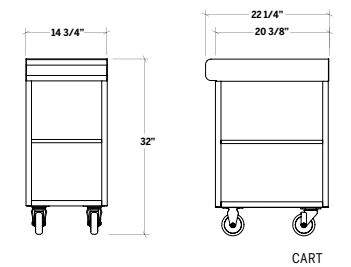
\*Several utility accessories are available. Take a moment to review our wide selection on page 65 and imagine the possibilities.



HROK-STTC-800028



STORAGE CABINET



CART

### STORAGE CABINET - MOBILE CART

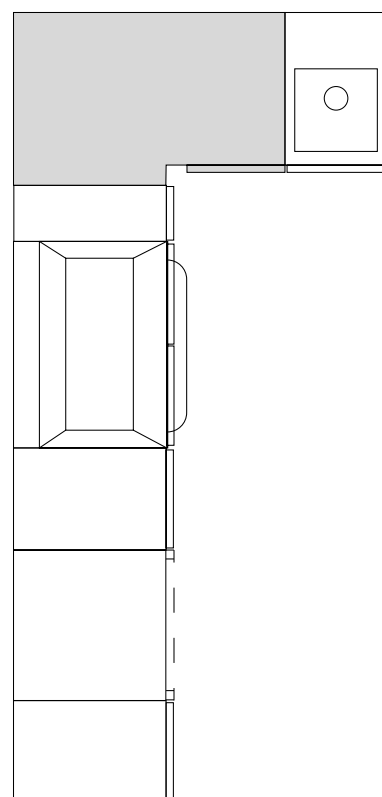
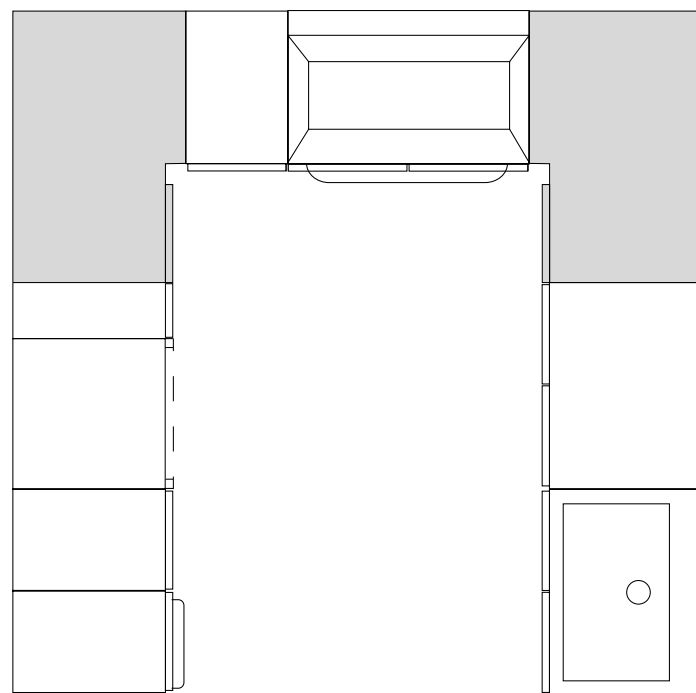
This cart enables you to easily transport your cutlery or dishes, which can also be stored directly in the cabinet to keep them safe from the elements. The cabinet includes a hinged and soft-closing door, similar to those of the rest of your kitchen\*.

PURE STYLE	LINE STYLE	CABINET WIDTH (X)	OPENING
HROK-STTC-800028	HROK-STTC-800228	18"	1L
HROK-STTC-800029	HROK-STTC-800229	18"	1R

\*Several utility accessories are available. Take a moment to review our wide selection on page 65 and imagine the possibilities.

**OPENING** 1L : Left hinges  
1R : Right hinges

This corner module provides more flexibility to help you create your ideal kitchen. If your space allows you to install an "L" or "U" shaped kitchen, this cabinet is a must.



### CORNER STORAGE CABINET

This module allows you to make a 90° change of direction by adding spacious storage space. It has a shelf at mid-height behind a single door with wide-angle hinges and shock absorbers\*.

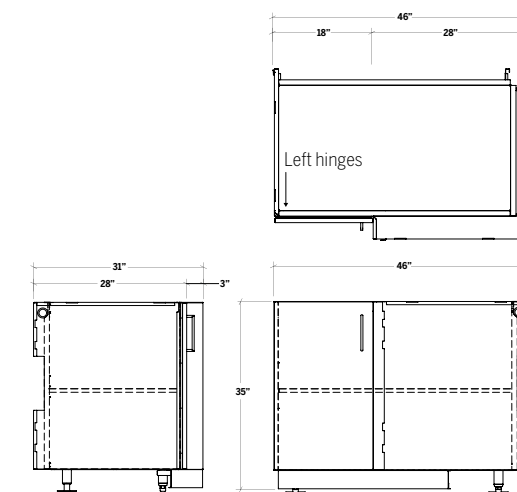
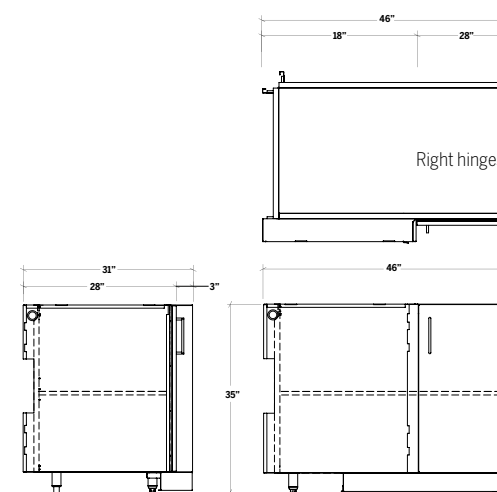
PURE STYLE	LINE STYLE	CABINET WIDTH (X)	OPENING
HROK-STC-800026	HROK-STC-800226	18"	1L
HROK-STC-800027	HROK-STC-800227	18"	1R



HROK-STC-800026



HROK-STC-800027



\*Several utility accessories are available. Take a moment to review our wide selection on page 65 and imagine the possibilities.

**OPENING** 1L : Left hinges  
1R : Right hinges

# APPLIANCES

In addition to offering good storage space, this collection sink cabinet is distinguished by its removable shelf for storing cleaning products, bottles or spices.

We also like the appliance module versatility—use it to integrate a 24" appliance or transform it into a comfortable work area for preparing or serving food.



## APPLIANCE MODULES

Whether you're enjoying a romantic glass of wine at sunset or entertaining a group of friends for an impromptu feast, you'll be delighted to have an outdoor refrigerator nearby. Our appliance modules adapt to a freestanding or built-in installation to accommodate the refrigerator of your choice.

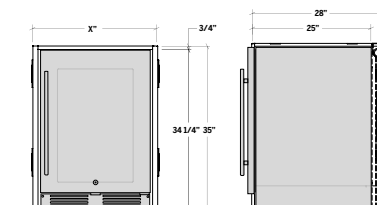
### APPLIANCE MODULES

The appliance module is an easy way to add an outdoor-grade undercounter appliance. Refrigerator, wine cooler, or dishwasher can easily be integrated into your kitchen configuration, between two cabinets or even at the end.

\*Refrigerator not included



HROK-APP-800032



	CABINET WIDTH (X)	COMPATIBLE APPLIANCE
HROK-APP-800070	18"	15"
HROK-APP-800031	24"	21"
HROK-APP-800032	27"	24"

### REFRIGERATORS

Those superior quality refrigerators/wine coolers integrate seamlessly with the appliance modules, giving you an all-in-one solution that simplifies your shopping.



HR-RUO-15-1



HR-RUO-24-1



HR-RUO-24-2

	CABINET WIDTH	REFRIGERATOR WIDTH
HR-RUO-15-1	18"	15"
HR-RUO-24-1	27"	24"
HR-RUO-24-2	27"	24"



\*Visit our website to choose from our Outdoor Refinements refrigerators. (Available in Canada only)



# AMBIANCE

## AMBIANCE MODULES

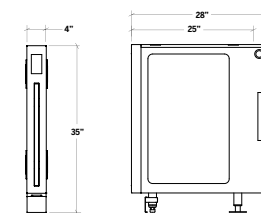
### AMBIANCE MODULES - LIGHTING

Your outdoor kitchen space's atmosphere will guide how you use it. Add lighting modules at both ends of your configuration or between cabinets to create an inviting environment. This lighting module is also offered with a box to accommodate a power supply.

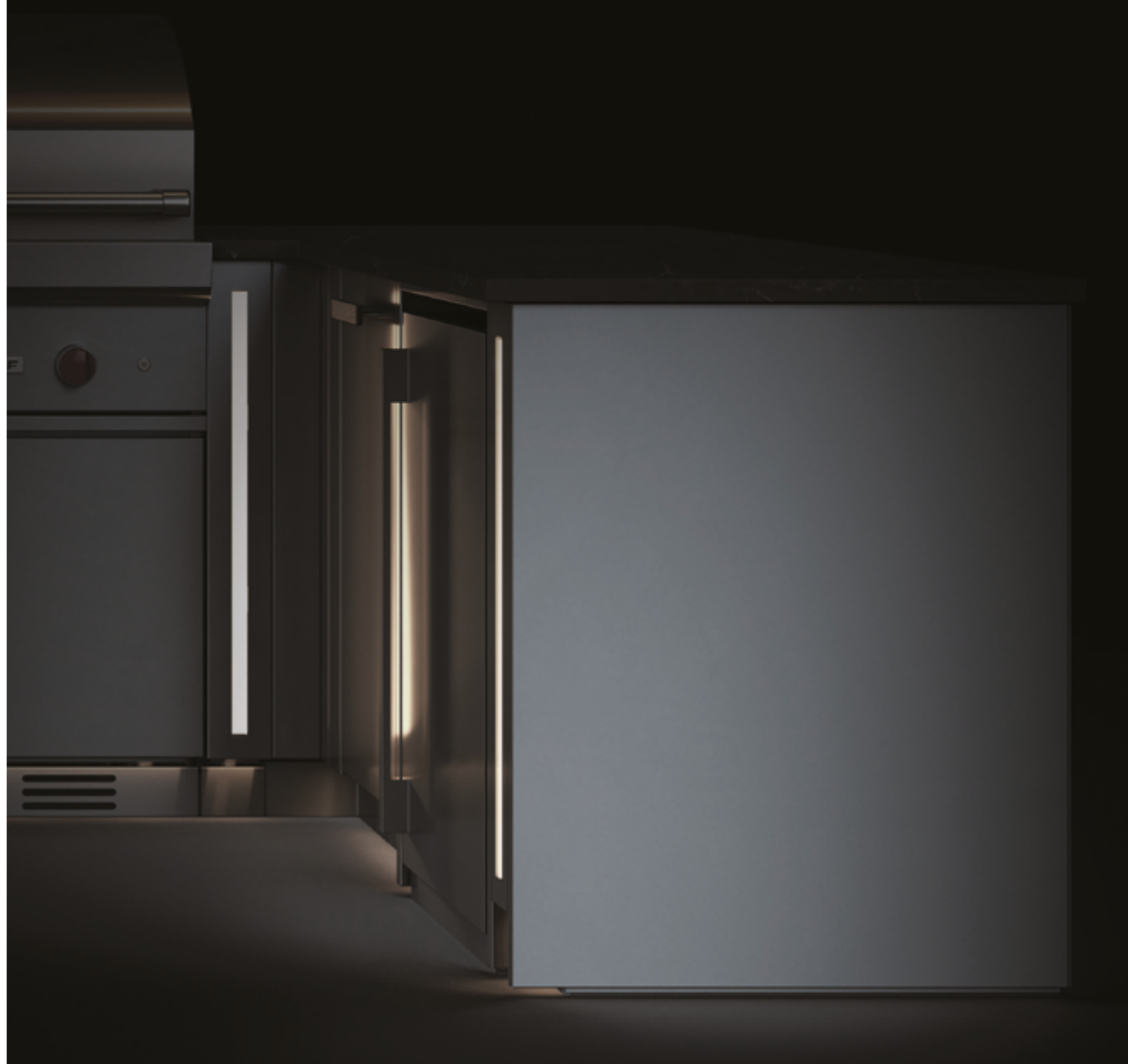
	ELECTRICAL OUTLET
HROK-LEDL-800036	YES
HROK-LEDL-800037	NO



HROK-LEDL-800036 HROK-LEDL-800037



# FINISH

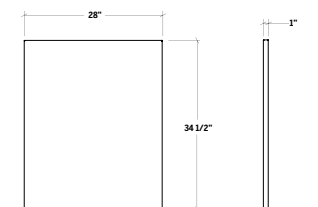


## FINISH MODULES AND COUNTER LEG

### END PANELS

This commercial grade stainless steel panel is installed at the ends of a configuration when exposed. It hides the cabinet structure and perfectly completes your layout.

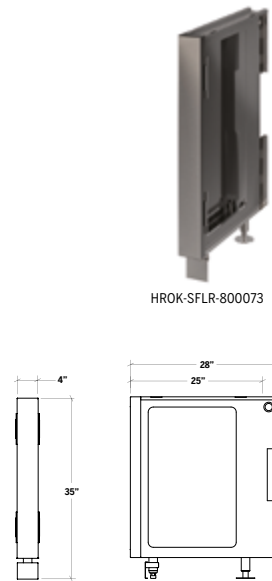
INSTALLATION	
HROK-EFLR-800043	LEFT
HROK-EFLR-800044	RIGHT



### SUPPORT FILLER MODULE

This module will help you enlarge the support surface to accommodate a grill or a burner, or can allow the installation of a grill at the end of the configuration.

HROK-SFLR-800073

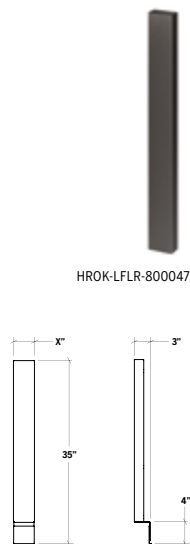


### FILLER PANEL

The linear filler panel allows you to make a front adjustment to the dimensions of your configuration and is easily inserted and fixed between two cabinets.

HROK-LFLR-800046	2"	NO
HROK-LFLR-800047	4"	NO
HROK-LFLR-800048	4"	YES
HROK-LFLR-800049	6"	NO

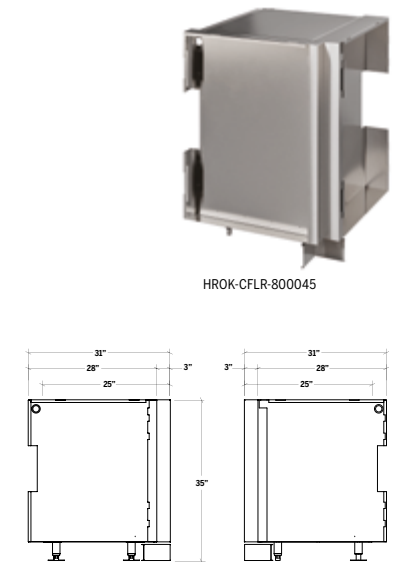
	WIDTH (X)	ELECTRICAL OUTLET
HROK-LFLR-800046	2"	NO
HROK-LFLR-800047	4"	NO
HROK-LFLR-800048	4"	YES
HROK-LFLR-800049	6"	NO



### CORNER FILLER MODULE

This module allows for a 90° change of direction without adding storage space. It is easily inserted and fixed between two cabinets.

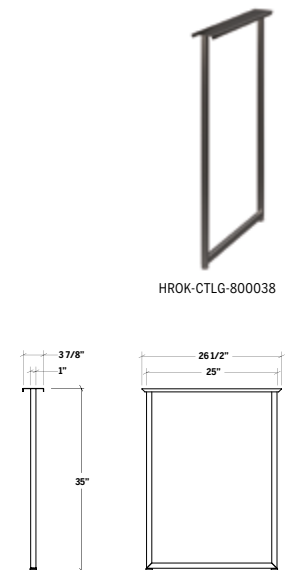
HROK-CFLR-800045



### COUNTERTOP LEG

The stainless steel countertop leg will support a work surface and create a dining area right in your outdoor kitchen. Use the adjustable legs to level it.

HROK-CTLG-800038



HROK-CFLR-800045

HROK-CTLG-800038



# *BUILT-IN* CABINETS

The built-in cabinets and access doors of the *DISTINCTION* collection share the same refined aesthetics and unparalleled construction of the self-standing cabinets.

Fully enclosed cabinets and access doors available

Full and half-height cabinets to accommodate equipment (grill, sink, etc.)

Invisible frame installation

Soft-closing hardware



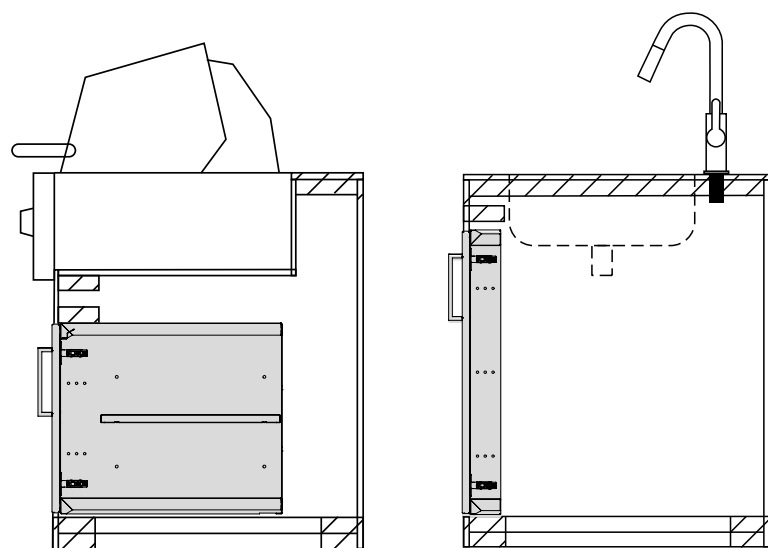
Visit our website to see the full range of our built-in cabinets.

## DESIGNED TO *FIT*

Our entire line of built-in cabinets is divided into two categories: storage cabinets and access doors.

Storage cabinets, which include drawers, offer a completely enclosed construction, although not as weatherproof as self-standing cabinets. In addition to individual modules that can be easily installed in a structure, this line also offers pre-designed cabinet and drawer layouts for a versatile space that keeps your belongings dry.

Access doors, on the other hand, are a stylish solution for accessing the interior of the built structure. They provide storage space for items that require less protection from the elements, such as your cleaning tools or coal bags.

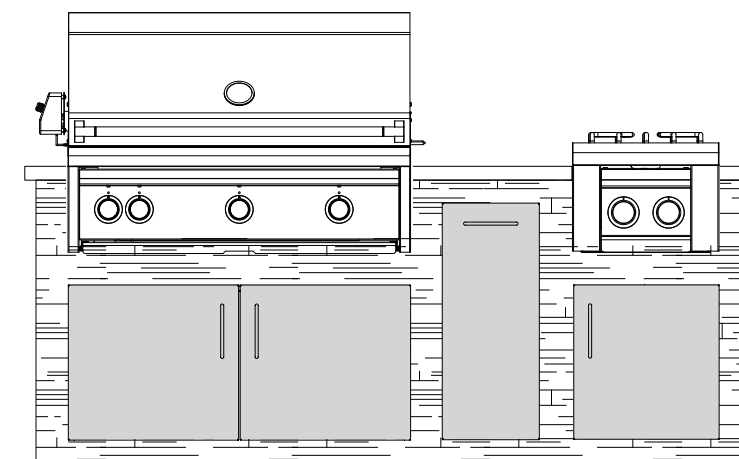




# STORAGE

## BEYOND YOUR EXPECTATIONS

Storage cabinets and access doors come in different widths and heights. "Full-height" cabinets and doors provide maximum clearance for large items, while "half-height" cabinets and doors are helpful for storing materials directly underneath the cooking equipment.

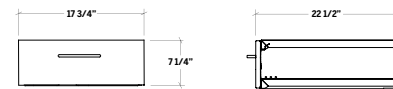


# STORAGE CABINETS

Give your space a seaside feel with our built-in cabinets for outdoor kitchens. These cabinets and modules that can be integrated into a built structure will enhance your outdoor living space. Whether you choose stone, stucco, or ceramic as your finish, pairing it with stainless steel will always give a "je-ne-sais-quoi" to your deck.



HROK-ST-806039

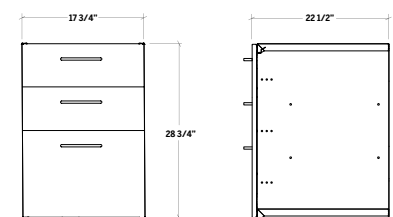


## STORAGE CABINETS - DRAWERS

The built-in cabinets with drawers are ideal for storing your favourite utensils, accessories, and cooking tools. Pair this cabinet with other built-in items or with any DISTINCTION self-standing cabinets of the same style for a dream kitchen.



HROK-ST-806031



PURE STYLE	LINE STYLE	CABINET WIDTH	CABINET HEIGHT	OPENING
HROK-ST-806029	HROK-ST-806229	12"	29"	C
HROK-ST-806039	HROK-ST-806239	18"	7 1/4"	1D
HROK-ST-806031	HROK-ST-806231	18"	29"	3D
HROK-ST-806030	HROK-ST-806230	18"	29"	R

\*Several utility accessories are available. Take a moment to review our wide selection on page 65 and imagine the possibilities.

**OPENING** C : sliding CHEF  
1D : 1 drawer  
2D : 2 drawers  
R : Recycling

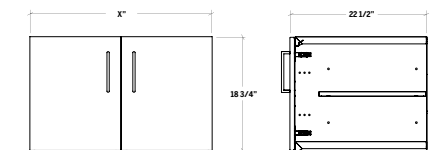
## STORAGE CABINET - 19" MID-HEIGHT

The mid-height storage cabinets are ideal for storing cooking tools. The concealed frame cabinet includes an adjustable shelf. The mid-height format is optimal under a cooking appliance or in smaller spaces. Pair this product with other products for built-in outdoor kitchens and with DISTINCTION freestanding cabinets of the same style for a dream kitchen.

PURE STYLE	LINE STYLE	CABINET WIDTH (X)	OPENING
HROK-ST-806015	HROK-ST-806215	18"	1L
HROK-ST-806016	HROK-ST-806216	18"	1R
HROK-ST-806017	HROK-ST-806217	24"	1L
HROK-ST-806018	HROK-ST-806218	24"	1R
HROK-ST-806019	HROK-ST-806219	30"	2D
HROK-ST-806020	HROK-ST-806220	36"	2D
HROK-ST-806021	HROK-ST-806221	42"	2D
HROK-ST-806022	HROK-ST-806222	48"	2D



HROK-ST-806019



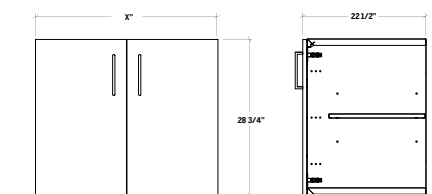
## STORAGE CABINET

These built-in cabinets provide access to the under-counter space of a built-up outdoor kitchen. The invisible frame adds to the refinement. Pair this cabinet with other built-in items or with any DISTINCTION self-standing cabinets of the same style for a dream kitchen.

PURE STYLE	LINE STYLE	CABINET WIDTH (X)	OPENING
HROK-ST-806023	HROK-ST-806223	18"	1L
HROK-ST-806024	HROK-ST-806224	18"	1R
HROK-ST-806025	HROK-ST-806225	24"	1L
HROK-ST-806026	HROK-ST-806226	24"	1R
HROK-ST-806027	HROK-ST-806227	30"	2D
HROK-ST-806028	HROK-ST-806228	36"	2D



HROK-ST-806027



\*Several utility accessories are available. Take a moment to review our wide selection on page 65 and imagine the possibilities.

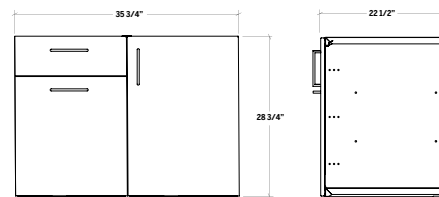
**OPENING** 1L : Left hinges  
1R : Right hinges  
2D : 2 doors

**STORAGE CABINET - DRAWER AND DOOR**

This built-in cabinet includes a pull-out recycling bin, a drawer, and an additional storage space behind a door. Designed to be modular, this all-in-one system can be installed anywhere it is needed. Pair this cabinet with other built-in items or with any DISTINCTION self-standing cabinets of the same style for a dream kitchen.



HROK-ST-806032



PURE STYLE	LINE STYLE	CABINET WIDTH	OPENING
HROK-ST-806033	HROK-ST-806233	18"	1D, 1L
HROK-ST-806034	HROK-ST-806234	18"	1D, 1R
HROK-ST-806032	HROK-ST-806232	36"	1L

**ACCESS DOORS**

Access doors are added to give direct access to the space under the island. They offer a sophisticated look behind which you can store, out of sight, tools and fuels that require less protection.

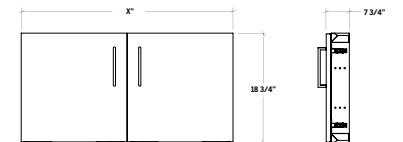
**ACCESS DOOR(S) - 19" MID-HEIGHT**

Mid-height doors are ideal for storing kitchen tools under a cooking appliance or when space is limited. Pair these doors with other built-in items or with any DISTINCTION self-standing cabinets of the same style for a dream kitchen.

PURE STYLE	LINE STYLE	CABINET WIDTH (X)	OPENING
HROK-ACF-806001	HROK-ACF-806201	18"	1L
HROK-ACF-806002	HROK-ACF-806202	18"	1R
HROK-ACF-806003	HROK-ACF-806203	24"	1L
HROK-ACF-806004	HROK-ACF-806204	24"	1R
HROK-ACF-806005	HROK-ACF-806205	30"	2D
HROK-ACF-806006	HROK-ACF-806206	36"	2D
HROK-ACF-806007	HROK-ACF-806207	42"	2D
HROK-ACF-806008	HROK-ACF-806208	48"	2D



HROK-ACF-806006



\*Several utility accessories are available. Take a moment to review our wide selection on page 65 and imagine the possibilities.

**OPENING** 1L : Left hinges 1D : 1 drawer  
1R : Right hinges

\*Several utility accessories are available. Take a moment to review our wide selection on page 65 and imagine the possibilities.

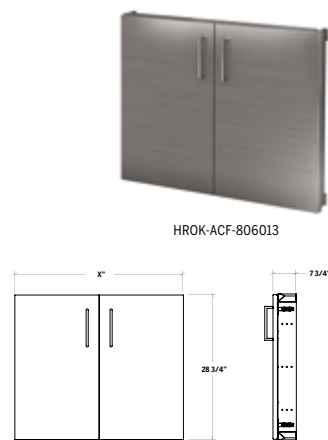
**OPENING** 1L : Left hinges 2D : 2 doors  
1R : Right hinges



**ACCESS DOOR(S)**

These access doors are installed in an invisible frame that gives the unit a sophisticated and elegant finish. Pair them with other built-in items or with any DISTINCTION self-standing cabinets of the same style for a dream kitchen.

PURE STYLE	LINE STYLE	CABINET WIDTH (X)	OPENING
HROK-ACF-806009	HROK-ACF-806209	18"	1L
HROK-ACF-806010	HROK-ACF-806210	18"	1R
HROK-ACF-806011	HROK-ACF-806211	24"	1L
HROK-ACF-806012	HROK-ACF-806212	24"	1R
HROK-ACF-806013	HROK-ACF-806213	30"	2D
HROK-ACF-806014	HROK-ACF-806214	36"	2D



\*Several utility accessories are available. Take a moment to review our wide selection on page 65 and imagine the possibilities.

**OPENING** 1L : Left hinges 2D : 2 drawers  
1R : Right hinges

# THE *ACCESSORIES*

Don't let the elegance of our accessories fool you. In addition to giving your dream kitchen a finishing touch, these accessories will quickly become an essential part of your daily life. Handcrafted with the same high-quality standards as the rest of our kitchens, these products are handy, sturdy, and eye-catching.

Designed by  
experts in  
commercial  
cooking

Thoughtfully  
designed to  
perfectly match  
your **DISTINCTION**  
kitchen

Design inspired by  
our expertise in  
commercial kitchen  
manufacturing

A wide selection  
of accessories  
with various  
features

# ACCESSORIES

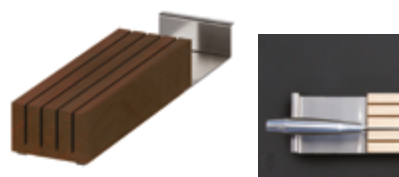
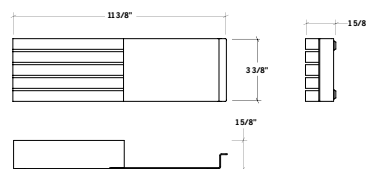
Bottle holders, multifunction trays, knife blocks, colanders, cutting boards, etc. There are many ways to enhance your DISTINCTION kitchen. Our wide selection of products opens up a world of possibilities. Let yourself be carried away.

## KNIFE BLOCK

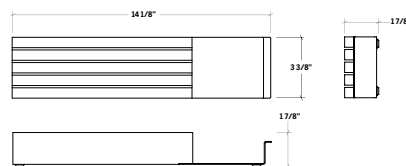
One knife block, two models, suitable for table knives or chef's knives. Your blades are protected by the maple or walnut divider while the handle rests in an elegant brushed finish stainless steel holder.



HROK-ACC-805000



HROK-ACC-805017



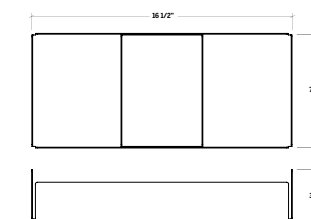
	WOOD	KNIFE TYPE
HROK-ACC-805000	E	Table
HROK-ACC-805016	N	Table
HROK-ACC-805001	E	Chef
HROK-ACC-805017	N	Chef

## MULTIFUNCTION TRAYS

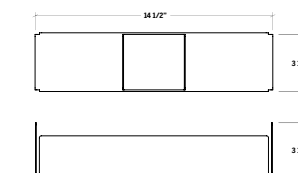
These stainless steel trays are perfect for maximizing your drawer space and storing utensils, towels or other tools. We've also made them stylish and easy to carry, so all you have to do is take them out of the drawer and place them on the table. The dividers can be used in trays or directly in the drawer.



HROK-ACC-805003



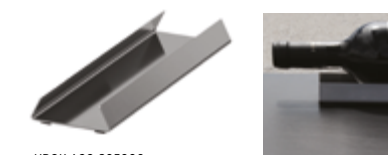
HROK-ACC-805004



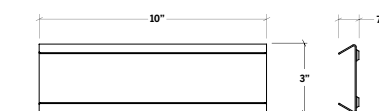
	TYPE	DIMENSIONS
HROK-ACC-805002	Long	3 1/2" x 16 1/2"
HROK-ACC-805003	Long	7" x 16 1/2"
HROK-ACC-805004	Short	3 1/2" x 14 1/2"

## BOTTLE HOLDER

Place your bottles horizontally without the risk of them rolling or falling off with this stainless steel bottle holder. It can be placed on any flat surface and is suitable for different diameters.



HROK-ACC-805006

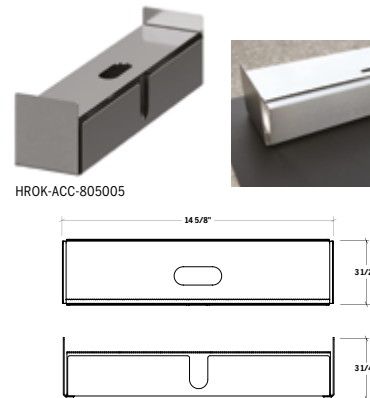


HROK-ACC-805006

**WRAPPING PAPER DISPENSER**

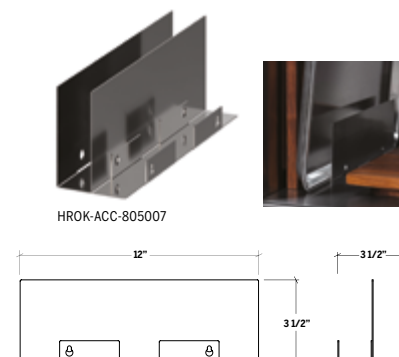
This dispenser replaces cardboard boxes and makes storing, dispensing, and cutting foil and plastic film easy. It fits perfectly in the drawer module, horizontally.

HROK-ACC-805005

**BOARD AND TRAY STORAGE RACK**

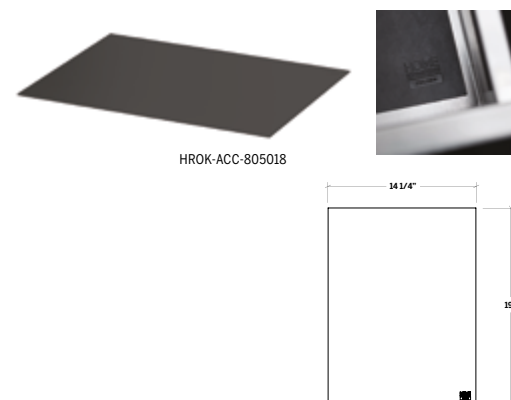
This storage rack comes with two divisions to store two boards or trays 1.5 inches thick or less. And what if you need more than two? Interlock as many racks as you want and configure the number of dividers you want! The racks can be installed in any cabinet with a hinged door.

HROK-ACC-805007

**LEATHER DRAWER MAT**

This vegetable-tanned leather mat protects the surface and helps reduce metallic sounds. It also adds elegance to your kitchen, easily fitting into 18" drawers, the sideboard, or any other surface.

HROK-ACC-805018

**STORAGE FOR BINS**

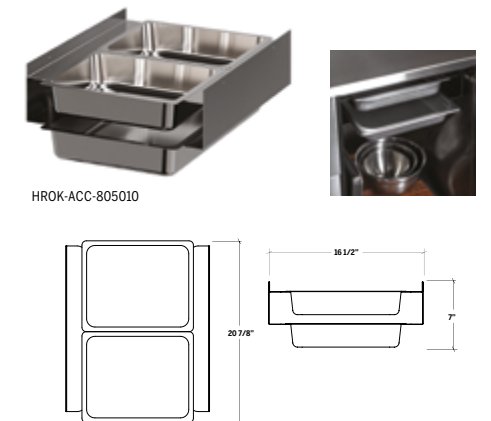
Inspired by the restaurant industry, this utility module is handcrafted in Canada and features spacious plastic storage bins and two angles. It's the perfect tool to keep your work surface clean. This unit will ONLY fit in the 18" storage module with a door.

HROK-ACC-805009

**STAINLESS STEEL STORAGE FOR CONTAINERS**

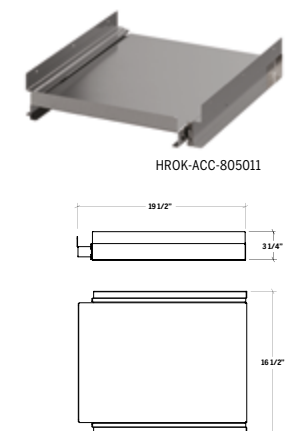
Use this restaurant-inspired food rack to store your fresh vegetables or fruits for a short time. While it won't keep food hot or fresh, it's a perfect accessory to keep your space clear while you cook. It can ONLY be installed in an 18" storage module with a door.

HROK-ACC-805010

**18" SLIDING SHELF**

Get quick access to the contents of your cabinets with this pull-out shelf. We have added a slight return at the back to keep your gear from sliding to the bottom. This accessory can ONLY be installed in an 18" storage unit with a door.

HROK-ACC-805011



# *BUILD* YOUR DREAM SPACE

With *DISTINCTION*, your outdoor oasis is within reach. Now all you have to do is take action. For a maximum experience, read the following section carefully. We explain how to successfully plan the perfect outdoor kitchen.



# 01.

## DESIGN BASICS

For the perfect blend of style and functionality, you will want to start by choosing your outdoor kitchen type of construction :

- **Self-standing**
- **Built-in**
- **A mix of both**

Our solutions are completely modular. You can configure the kitchen that suits you best, with the features you need. Depending on the available space and the desired work surface, choose if your configuration will be :

- **Linear**
- **Parallel (galley type)**
- **In an "L" shape**
- **In an "U" shape**

And finally, choose which of our two styles will give your outdoor kitchen its finishing touch :

- **LINE**
- **PURE**

# 02.

## INSTALLATION PLAN AND SPACE DIMENSIONS

The starting point in an outdoor kitchen project is the kitchen positioning. Assessing the distance between your outdoor kitchen and your indoor space will help you identify the storage cabinets and specialty cabinets needed to keep all your essentials at hand.

It is also important to make sure there is sufficient space to cover your needs. If that space is covered by a roof, make sure to provide appropriate ventilation to ensure efficient cooking as well as clearing of gas and smoke. Also make sure you are on a stable and level ground.

When measuring the targeted space, make sure you take the following information into account :

- Overall dimensions of the available space (length, depth, height)
- Positioning of existing architectural elements (walls and low walls, beams, windows, mouldings, etc.)
- Positioning of existing and future services (electricity, plumbing, gas)
- Ground elevation
- Nearby materials (to keep cooking appliances away from combustible materials)
- In the case of a freestanding kitchen, the faces that will be exposed (to provide the finishing panels at the back or end of the configuration)

# 03.

## COOKING EQUIPMENT AND OTHER APPLIANCES INTEGRATION

The focal point of any outdoor kitchen is without a doubt the grill. The DISTINCTION self-standing collection offers a multitude of cabinets that can accommodate a wide selection of the leading brands of grill and gas burners, or even a refrigerator or a dishwasher. To confirm that the dimensions are correct, make sure you have the following information :

- Overall dimensions of the appliance, closed and open, to plan the space required when in use
- Clearances required by the equipment manufacturer between the cooking surface and adjacent surfaces (combustible and non-combustible)
- Opening dimensions required to integrate the cooking equipment into the cabinet
- Thickness of the countertop on which the built-in gas grill will be placed
- Model numbers and technical data sheets of the equipment to be integrated
- The addition of the propane tank cabinet if the grill is not remotely powered
- Clearance required to open and close access, doors, and drawers

If you are using built-in modules, be sure to **follow the equipment manufacturer's instructions** regarding the integration of the appliance into a structure. The DISTINCTION built-in collection offers cabinets and access doors that will match the width of your cooking equipment.

# 04.

## COUNTERTOP PLANNING

Your work surface can be custom-made in the material of your choice. Just confirm that the materials chosen can withstand the elements and that the dimensions correspond to those of your new outdoor kitchen. Don't forget to tell your supplier that DISTINCTION freestanding cabinets have a standard depth of 28".

Outdoor Refinements by Julien offer stainless steel countertops estimation, design, and fabrication services. For more information, please visit our website or contact our customerservice at [serviceclientele@julien.ca](mailto:serviceclientele@julien.ca)

# WARRANTY

## Generalities

Outdoor Refinements may at its sole option, repair, replace or make appropriate adjustments to the Product or components proven to be defective in order to restore to good working condition.

In no event, even if Product or components are found to be defective, shall Outdoor Refinements' liability exceed the price paid for the Product. Outdoor Refinements reserves the right to inspect the installation prior to the replacement or repair of the Product or its component parts. Outdoor Refinements may at its discretion require pictures prior to analyzing a claim. This limited warranty is null and void if the Product or components have been repaired, altered or modified other than by Outdoor Refinements or under its supervision.

This limited warranty replaces any and all other warranty, expressed or implied, including implied warranties of merchantability or fitness for a particular purpose. Laws governing product warranties may vary from one state or province to another. This warranty is not intended to contravene to the public order and shall not be so interpreted. This limited warranty extends only to the original owner/end user in residential applications and is not transferable to any subsequent purchaser. In the event of a warranty claim, original proof of purchase (sales receipt) will be required. Shipping and handling costs (for returning the product or components for repairs or to replace product or components) are not covered under this limited warranty. Also excluded from this limited warranty is any labor, workmanship or other costs incurred in connection with the Product or components removal, repairs, replacement, adjustment, or installation and any incidental or consequential damages.

**ATTENTION** > Warranty will be null and void for any damage resulting from installation not respecting the instructions and Outdoor Refinements will not be held responsible for any costs incurred. In the event of a limited warranty claim, original proof of purchase will be required – save original sales receipt.

## Outdoor kitchen cabinets

Outdoor Refinements offers a LIFETIME limited warranty against any manufacturing or materials defect on all outdoor kitchen stainless steel products, provided that the Client, or the final user, makes a normal, residential and reasonable use of the products. Outdoor Refinements do not warrant defects or damage caused by improper installation.

Outdoor Refinements offers a TWO (2) YEAR limited warranty against any manufacturing or materials defect on all hardware products (slides, hinges, etc.), provided that the Client, or the final user, makes a normal, residential and reasonable use of the products.

Outdoor Refinements offers ONE (1) YEAR limited warranty against any manufacturing or materials defect on all electronic or lighting components, options and accessories provided that the Client, or the final user, makes a normal, residential and reasonable use of the products.

Outdoor Refinements offers a prorated TEN (10) YEAR limited warranty against peeling, cracking and chalking of the coating on painted surfaces following the original date of purchase. During the first THREE (3) years of the life of the product, Outdoor Refinements will cover one hundred percent (100%) of the cost of the product warranty (excluding any labor). Beginning on the third anniversary of the installation of the painted product, Outdoor Refinements reduces its warranty coverage gradually until the end of the coverage period. The table below illustrates the warranty coverage:

YEAR(S)	% COVERED BY OUTDOOR REFINEMENTS
0-3	100
3-5	50
5-10	25

EXCLUSIONS : This warranty does not cover the following :

- Chemical or natural surface corrosion (namely because of salt water)
- Color change or fading
- Scuffs or scratches
- Damage caused by misuse, abnormal or abusive use or negligence
- Damage caused during transportation
- Damages caused by environmental factors
- Commercial use of the products
- Defect or damage caused by an improper installation
- Bumps or deformation caused by the impact of any object
- Normal wear
- Installation, maintenance or care related problems

If you believe that you have a warranty claim or for more information about the warranty on our products, visit our website [homerefinements.ca](http://homerefinements.ca)

# INDEX

PRODUCT	DESCRIPTION	PKG WEIGHT (lbs)	PKG. DIMENSION (In)		
			W	H	D
<b>SELF-STANDING CABINETS</b>					
PURE STYLE	LINE STYLE				
<b>HROK-GR-800059</b>	<b>HROK-GR-800259</b>	Gas grill cabinet, 1 door, left hinge, 15"	80	32 1/4	19 1/4 37 3/8
<b>HROK-GR-800060</b>	<b>HROK-GR-800260</b>	Gas grill cabinet, 1 door, right hinge, 15"	80	32 1/4	19 1/4 37 3/8
<b>HROK-GR-800061</b>	<b>HROK-GR-800261</b>	Gas grill cabinet, 1 door, left hinge, 18"	85	32 1/4	22 1/4 37 3/8
<b>HROK-GR-800062</b>	<b>HROK-GR-800262</b>	Gas grill cabinet, 1 door, right hinge, 18"	85	32 1/4	22 1/4 37 3/8
<b>HROK-GR-800075</b>	<b>HROK-GR-800275</b>	Gas grill cabinet, 1 door, left hinge, 24"	100	32 1/4	28 1/4 37 3/8
<b>HROK-GR-800076</b>	<b>HROK-GR-800276</b>	Gas grill cabinet, 1 door, right hinge, 24"	100	32 1/4	28 1/4 37 3/8
<b>HROK-GR-800078</b>	<b>HROK-GR-800278</b>	Gas grill cabinet, 2 doors, 30"	90	32 1/4	34 1/4 37 3/8
<b>HROK-GR-800015</b>	<b>HROK-GR-800215</b>	Gas grill cabinet, 2 doors, 36"	90	32 1/4	40 1/4 37 3/8
<b>HROK-GR-800016</b>	<b>HROK-GR-800216</b>	Gas grill cabinet, 2 doors, 42"	100	32 1/4	46 1/4 37 3/8
<b>HROK-GR-800017</b>	<b>HROK-GR-800217</b>	Gas grill cabinet, 2 doors, 48"	110	32 1/4	52 1/4 37 3/8
<b>HROK-GR-800074</b>	<b>HROK-GR-800274</b>	Gas grill cabinet, 3 doors, 54"	140	32 1/4	58 1/4 37 3/8
<b>HROK-GRC-800079</b>	<b>HROK-GRC-800279</b>	Ceramic Grill, low shelf, 30"	95	32 1/4	34 1/4 37 3/8
<b>HROK-GRC-800014</b>	<b>HROK-GRC-800214</b>	Ceramic Grill, 2 doors, 30"	95	32 1/4	34 1/4 37 3/8
<b>HROK-SSSM-800001</b>	<b>HROK-SSSM-800201</b>	Smartstation sink cabinet, Walnut acc., 1 door, left hinge, 18"	115	32 1/4	22 1/4 39 7/8
<b>HROK-SSSM-800002</b>	<b>HROK-SSSM-800202</b>	Smartstation sink cabinet, Walnut acc., 1 door, right hinge, 18"	115	32 1/4	22 1/4 39 7/8
<b>HROK-SSSM-800003</b>	<b>HROK-SSSM-800203</b>	Smartstation sink cabinet, Maple acc., 1 door, left hinge, 18"	115	32 1/4	22 1/4 39 7/8
<b>HROK-SSSM-800004</b>	<b>HROK-SSSM-800204</b>	Smartstation sink cabinet, Maple acc., 1 door, right hinge, 18"	115	32 1/4	22 1/4 39 7/8
<b>HROK-SSSM-800063</b>	<b>HROK-SSSM-800263</b>	Smartstation sink cabinet, Walnut acc., 2 doors, 30"	150	32 1/4	34 1/4 37 3/8
<b>HROK-SSSM-800064</b>	<b>HROK-SSSM-800264</b>	Smartstation sink cabinet, Maple acc., 2 doors, 30"	150	32 1/4	34 1/4 37 3/8
<b>HROK-SSSM-800009</b>	<b>HROK-SSSM-800209</b>	Smartstation sink cabinet, Walnut acc., 2 doors, 36"	160	32 1/4	40 1/4 39 7/8
<b>HROK-SSSM-800010</b>	<b>HROK-SSSM-800210</b>	Smartstation sink cabinet, Maple acc., 2 doors, 36"	160	32 1/4	40 1/4 39 7/8
<b>HROK-SSSC-800065</b>	<b>HROK-SSSC-800265</b>	SocialCorner sink cabinet Left apron, 2 doors, 30"	160	32 1/4	34 1/4 37 3/8
<b>HROK-SSSC-800066</b>	<b>HROK-SSSC-800266</b>	SocialCorner sink cabinet Right apron, 2 doors, 30"	160	32 1/4	34 1/4 37 3/8
<b>HROK-SSSC-800011</b>	<b>HROK-SSSC-800211</b>	SocialCorner sink cabinet Left apron, 2 doors, 36"	180	33 1/4	40 1/4 39 7/8
<b>HROK-SSSC-800012</b>	<b>HROK-SSSC-800212</b>	SocialCorner sink cabinet Right apron, 2 doors, 36"	180	33 1/4	40 1/4 39 7/8
<b>HROK-SSJ7-800007</b>	<b>HROK-SSJ7-800207</b>	Bar sink cabinet, 2 doors, 1 drawer, 36"	180	32 1/4	40 1/4 39 7/8
<b>HROK-SSBR-800077</b>	<b>HROK-SSBR-800277</b>	Bar sink cabinet, 2 doors, 36"	180	32 1/4	40 1/4 39 7/8
<b>HROK-SB-800057</b>	<b>HROK-SB-800257</b>	Sink Base cabinet, 1 door, Left hinge, 15"	80	32 1/4	19 1/4 37 3/8
<b>HROK-SB-800058</b>	<b>HROK-SB-800258</b>	Sink Base cabinet, 1 door, Right hinge, 15"	80	32 1/4	19 1/4 37 3/8
<b>HROK-SB-800005</b>	<b>HROK-SB-800205</b>	Sink Base cabinet, 1 door, Left hinge, 18"	90	32 1/4	22 1/4 37 3/8
<b>HROK-SB-800006</b>	<b>HROK-SB-800206</b>	Sink Base cabinet, 1 door, Right hinge, 18"	90	32 1/4	22 1/4 37 3/8

# INDEX

PRODUCT	DESCRIPTION	PKG WEIGHT (lbs)	PKG. DIMENSION (In)		
			W	H	D
<b>HROK-SB-800067</b>	<b>HROK-SB-800267</b> Sink Base cabinet, 1 door, Left hinge, 24"	100	32 1/4	28 1/4	37 3/8
<b>HROK-SB-800068</b>	<b>HROK-SB-800268</b> Sink Base cabinet, 1 door, Right hinge, 24"	100	32 1/4	28 1/4	37 3/8
<b>HROK-SB-800069</b>	<b>HROK-SB-800269</b> Sink Base cabinet, 2 doors, 30"	105	32 1/4	32 1/4	37 3/8
<b>HROK-SB-800013</b>	<b>HROK-SB-800213</b> Sink Base cabinet, 2 doors, 36"	110	32 1/4	40 1/4	37 3/8
<b>HROK-ST1D-800055</b>	<b>HROK-ST1D-800255</b> Storage Cabinet, 1 door, Left hinge, 15"	95	32 1/4	19 1/4	37 3/8
<b>HROK-ST1D-800056</b>	<b>HROK-ST1D-800256</b> Storage Cabinet, 1 door, Right hinge, 15"	95	32 1/4	19 1/4	37 3/8
<b>HROK-ST1D-800018</b>	<b>HROK-ST1D-800218</b> Storage Cabinet, 1 door, Left hinge, 18"	110	32 1/4	22 1/4	37 3/8
<b>HROK-ST1D-800019</b>	<b>HROK-ST1D-800219</b> Storage Cabinet, 1 door, Right hinge, 18"	110	32 1/4	22 1/4	37 3/8
<b>HROK-ST1D-800071</b>	<b>HROK-ST1D-800271</b> Storage Cabinet, 1 door, Left hinge, 24"	95	32 1/4	28 1/4	37 3/8
<b>HROK-ST1D-800072</b>	<b>HROK-ST1D-800272</b> Storage Cabinet, 1 door, Right hinge, 24"	95	32 1/4	28 1/4	37 3/8
<b>HROK-ST2D-800054</b>	<b>HROK-ST2D-800254</b> Storage Cabinet, 2 doors, 30"	130	32 1/4	28 1/4	37 3/8
<b>HROK-ST2D-800024</b>	<b>HROK-ST2D-800224</b> Storage Cabinet, 2 doors, 36"	135	32 1/4	40 1/4	37 3/8
<b>HROK-STCC-800030</b>	<b>HROK-STCC-800230</b> Chef Storage Cabinet, 12"	85	32 1/4	19 1/4	37 3/8
<b>HROK-STCC-800082</b>	<b>HROK-STCC-800282</b> Chef Storage Cabinet, 18"	120	32 1/4	22 1/4	37 3/8
<b>HROK-ST3D-800053</b>	<b>HROK-ST3D-800253</b> Storage Cabinet, 3 drawers, 15"	110	32 1/4	19 1/4	37 3/8
<b>HROK-ST3D-800020</b>	<b>HROK-ST3D-800220</b> Storage Cabinet, 3 drawers, 18"	120	32 1/4	22 1/4	37 3/8
<b>HROK-STTK-800033</b>	<b>HROK-STTK-800233</b> Propane Tank Cabinet, 1 door, Left hinge, 18"	80	32 1/4	22 1/4	37 3/8
<b>HROK-STTK-800034</b>	<b>HROK-STTK-800234</b> Propane Tank Cabinet, 1 door, Right hinge, 18"	80	32 1/4	22 1/4	37 3/8
<b>HROK-STTR-800035</b>	<b>HROK-STTR-800235</b> Recycling Cabinet, 18"	110	32 1/4	22 1/4	37 3/8
<b>HROK-STTR-800080</b>	<b>HROK-STTR-800280</b> Recycling Cabinet, 1 drawer, 18"	110	32 1/4	22 1/4	37 3/8
<b>HROK-STTC-800028</b>	<b>HROK-STTC-800228</b> Mobile Cart Storage Cabinet, 1 door, Left hinge, 18"	105	32 1/4	22 1/4	37 3/8
<b>HROK-STTC-800029</b>	<b>HROK-STTC-800229</b> Mobile Cart Storage Cabinet, 1 door, Right hinge, 18"	105	32 1/4	22 1/4	37 3/8
<b>HROK-STC-800026</b>	<b>HROK-STC-800226</b> Corner Storage Cabinet, 1 door, Left hinge, 18"	140	35 1/4	50 1/4	37 3/8
<b>HROK-STC-800027</b>	<b>HROK-STC-800227</b> Corner Storage Cabinet, 1 door, Right hinge, 18"	140	35 1/4	50 1/4	37 3/8
<b>OPEN STORAGE</b>			<b>W</b>	<b>H</b>	<b>D</b>
<b>HROK-STOM-800021</b>	Open Storage Cabinet, Front, 18"	80	32 1/4	22 1/4	37 3/8
<b>HROK-STOM-800025</b>	Open Storage Cabinet, Front, 36"	105	32 1/4	40 1/4	37 3/8
<b>HROK-STOC-800022</b>	Open Storage Cabinet, Left side, 18"	80	32 1/4	22 1/4	37 3/8
<b>HROK-STOC-800023</b>	Open Storage Cabinet, Right side, 18"	80	32 1/4	22 1/4	37 3/8
<b>HROK-APP-800070</b>	Appliance Module, 18" (for 15" appliance)	42	28	35	21/4
<b>HROK-APP-800031</b>	Appliance Module, 21"	45	35	28	21/4
<b>HROK-APP-800032</b>	Appliance Module, 24"	50	35	28	21/4

# INDEX

PRODUCT	DESCRIPTION	PKG WEIGHT (lbs)	PKG. DIMENSION (In)		
			W	H	D
<b>HROK-LEDL-800036</b>	Lighting Module with Electrical Outlet, 4"	30	31 1/8	36 1/8	8 1/8
<b>HROK-LEDL-800037</b>	Lighting Module, 4"	30	31 1/8	36 1/8	8 1/8
<b>HROK-EFLR-800043</b>	Left End Panel 1"	20	28	35	2 1/4
<b>HROK-EFLR-800044</b>	Right End Panel 1"	20	28	35	2 1/4
<b>HROK-SFLR-800073</b>	Support Filler Module, 4"	30	31 1/8	36 1/8	8 1/8
<b>HROK-LFLR-800046</b>	Filler Panel, 2"	10	34 7/8	10	3
<b>HROK-LFLR-800047</b>	Filler Panel, 4"	10	34 7/8	10	3
<b>HROK-LFLR-800048</b>	Filler Panel with Electrical Outlet, 4"	10	34 7/8	10	3
<b>HROK-LFLR-800049</b>	Filler Panel, 6"	15	34 7/8	10	3
<b>HROK-CFLR-800045</b>	Corner Filler Module	90	35 1/2	35 1/2	37 3/8
<b>HROK-CTLG-800038</b>	Countertop leg	10	28	35	2 1/4
<b>BUILT-IN CABINETS</b>					
<b>PURE STYLE</b>	<b>LINE STYLE</b>		<b>W</b>	<b>H</b>	<b>D</b>
<b>HROK-ST-806029</b>	<b>HROK-ST-806229</b>	Built-in Cabinet, Chef, 12"	58	32 1/4	16 1/4
<b>HROK-ST-806039</b>	<b>HROK-ST-806239</b>	Built-in Cabinet, 1 drawer, 18"	54	32 1/4	22 1/4
<b>HROK-ST-806031</b>	<b>HROK-ST-806231</b>	Built-in Cabinet, 3 drawers, 18"	87	32 1/4	22 1/4
<b>HROK-ST-806030</b>	<b>HROK-ST-806230</b>	Built-in Cabinet, Recycling, 18"	68	32 1/4	22 1/4
<b>HROK-ST-806015</b>	<b>HROK-ST-806215</b>	Built-in Mid-Height Cabinet, 1 door, Left hinges, 18"	38	32 1/4	22 1/4
<b>HROK-ST-806016</b>	<b>HROK-ST-806216</b>	Built-in Mid-Height Cabinet, 1 door, Right hinges, 18"	38	32 1/4	22 1/4
<b>HROK-ST-806017</b>	<b>HROK-ST-806217</b>	Built-in Mid-Height Cabinet, 1 door, Left hinges, 24"	47	32 1/4	28 1/4
<b>HROK-ST-806018</b>	<b>HROK-ST-806218</b>	Built-in Mid-Height Cabinet, 1 door, Right hinges, 24"	47	32 1/4	28 1/4
<b>HROK-ST-806019</b>	<b>HROK-ST-806219</b>	Built-in Mid-Height Cabinet, 2 doors, 30"	56	32 1/4	34 1/4
<b>HROK-ST-806020</b>	<b>HROK-ST-806220</b>	Built-in Mid-Height Cabinet, 2 doors, 36"	65	32 1/4	40 1/4
<b>HROK-ST-806021</b>	<b>HROK-ST-806221</b>	Built-in Mid-Height Cabinet, 2 doors, 42"	74	32 1/4	46 1/4
<b>HROK-ST-806022</b>	<b>HROK-ST-806222</b>	Built-in Mid-Height Cabinet, 2 doors, 48"	83	32 1/4	52 1/4
<b>HROK-ST-806023</b>	<b>HROK-ST-806223</b>	Built-in Cabinet, 1 door, Left hinge, 18"	57	32 1/4	22 1/4
<b>HROK-ST-806024</b>	<b>HROK-ST-806224</b>	Built-in Cabinet, 1 door, Right hinge, 18"	57	32 1/4	22 1/4
<b>HROK-ST-806025</b>	<b>HROK-ST-806225</b>	Built-in Cabinet, 1 door, Left hinge, 24"	70	32 1/4	28 1/4
<b>HROK-ST-806026</b>	<b>HROK-ST-806226</b>	Built-in Cabinet, 1 door, Right hinge, 24"	70	32 1/4	28 1/4
<b>HROK-ST-806027</b>	<b>HROK-ST-806227</b>	Built-in Cabinet, 2 doors, 30"	83	32 1/4	34 1/4
<b>HROK-ST-806028</b>	<b>HROK-ST-806228</b>	Built-in Cabinet, 2 doors, 36"	96	32 1/4	40 1/4



# INDEX

# INDEX

PRODUCT	DESCRIPTION	PKG WEIGHT (lbs)	PKG. DIMENSION (In)		
			W	H	D
<b>HROK-ST-806033</b>	<b>HROK-ST-806233</b> Built-in Cabinet, 1 drawer, 1 door, Left hinge, 18"	66	32 1/4	22 1/4	37 3/8
<b>HROK-ST-806034</b>	<b>HROK-ST-806234</b> Built-in Cabinet, 1 drawer, 1 door, Right hinge, 18"	66	32 1/4	22 1/4	37 3/8
<b>HROK-ST-806032</b>	<b>HROK-ST-806232</b> Built-in Cabinet, Recycling, 1 drawer, 1 door, 36"	134	32 1/4	40 1/4	37 3/8
<b>HROK-ACF-806001</b>	<b>HROK-ACF-806201</b> Access door, Mid-height, 1 door, Left hinge, 18"	15	32 1/4	22 1/4	37 3/8
<b>HROK-ACF-806002</b>	<b>HROK-ACF-806202</b> Access door, Mid-height, 1 door, Right hinge, 18"	15	32 1/4	22 1/4	37 3/8
<b>HROK-ACF-806003</b>	<b>HROK-ACF-806203</b> Access door, Mid-height, 1 door, Left hinge, 24"	20	32 1/4	28 1/4	37 3/8
<b>HROK-ACF-806004</b>	<b>HROK-ACF-806204</b> Access door, Mid-height, 1 door, Right hinge, 24"	20	32 1/4	28 1/4	37 3/8
<b>HROK-ACF-806005</b>	<b>HROK-ACF-806205</b> Access door, Mid-height, 2 doors, 30"	24	32 1/4	34 1/4	37 3/8
<b>HROK-ACF-806006</b>	<b>HROK-ACF-806206</b> Access door, Mid-height, 2 doors, 36"	28	32 1/4	40 1/4	37 3/8
<b>HROK-ACF-806007</b>	<b>HROK-ACF-806207</b> Access door, Mid-height, 2 doors, 36"	33	32 1/4	46 1/4	37 3/8
<b>HROK-ACF-806008</b>	<b>HROK-ACF-806208</b> Access door, Mid-height, 2 doors, 48"	37	32 1/4	52 1/4	37 3/8
<b>HROK-ACF-806009</b>	<b>HROK-ACF-806209</b> Access door, 1 door, Left hinge, 18"	22	32 1/4	22 1/4	37 3/8
<b>HROK-ACF-806010</b>	<b>HROK-ACF-806210</b> Access door, 1 door, Right hinge, 18"	22	32 1/4	22 1/4	37 3/8
<b>HROK-ACF-806011</b>	<b>HROK-ACF-806211</b> Access door, 1 door, Left hinge, 24"	28	32 1/4	28 1/4	37 3/8
<b>HROK-ACF-806012</b>	<b>HROK-ACF-806212</b> Access door, 1 door, Right hinge, 24"	28	32 1/4	28 1/4	37 3/8
<b>HROK-ACF-806013</b>	<b>HROK-ACF-806213</b> Access door, 2 doors, 30"	34	32 1/4	34 1/4	37 3/8
<b>HROK-ACF-806014</b>	<b>HROK-ACF-806214</b> Access door, 2 doors, 36"	40	32 1/4	40 1/4	37 3/8

## ACCESSORIES

PRODUCT	DESCRIPTION	PKG WEIGHT (lbs)	W	H	D
<b>HROK-ACC-805000</b>	Table knife block, Maple	0.8	4	16	4
<b>HROK-ACC-805016</b>	Table knife block, Walnut	0.8	4	16	4
<b>HROK-ACC-805001</b>	Chef knife block, Maple	1.2	4	16	4
<b>HROK-ACC-805017</b>	Chef knife block, Walnut	1.3	4	16	4
<b>HROK-ACC-805002</b>	Multifunction tray, Long, 3 1/2 x 16 1/2 x 3"	2.7	9 1/4	18 1/2	5
<b>HROK-ACC-805003</b>	Multifunction tray, Long, 7 1/4 x 16 1/2 x 3"	4.1	9 1/4	18 1/2	5
<b>HROK-ACC-805004</b>	Multifunction tray, Short, 3 1/2 x 14 1/2 x 3"	2.2	4	16	4
<b>HROK-ACC-805005</b>	Wrapping paper dispenser, 3 1/2 x 14 1/2 x 3"	3.4	9 1/4	18 1/2	5
<b>HROK-ACC-805006</b>	Bottle Holder, 3 x 10"	0.6	4	16	4
<b>HROK-ACC-805007</b>	Boards and Trays Holder	2	3	16	6 1/2

W H D

<b>HROK-ACC-805018</b>	Leather mat for 15" cabinet drawer - 11 1/4 x 19"	0.5	4	16	4
<b>HROK-ACC-805008</b>	Leather mat for 18" cabinet drawer - 14 1/4 x 19"	0.5	4	16	4
<b>HROK-ACC-805009</b>	Storage Racking for plastic bins, 18"	5	17	23	8
<b>HROK-ACC-805010</b>	Storage Racking for stainless steel pans, 18"	5	17	23	8
<b>HROK-ACC-805011</b>	Sliding Shelf, 18"	5	17	23	8

## DISCOVER MORE COLLECTIONS

La Collection ESSENCE

ESSENCE outdoor kitchens were born out of a desire to focus on the simple pleasure of cooking. We wondered: what makes up the heart of the kitchen? Our answer : To keep only the essential components and create modules with a clean design.

The result is a simple and enjoyable experience that gives you the space you need to devote yourself to your culinary creations.



Visit our website  
to learn more.



*IT'S TIME TO TAKE IT OUTSIDE*

OUTDOOR  
REFINEMENTS

**JULIEN**

1 866 901-5624  
customerservice@julien.ca

955, rue Lachance, Québec (Québec)  
Canada G1P 2H3

[homerefinelements.ca](http://homerefinelements.ca)

Product : HROK-DISTINCTION-CATALOG-2022-EN  
A-2022-12  
996313726