

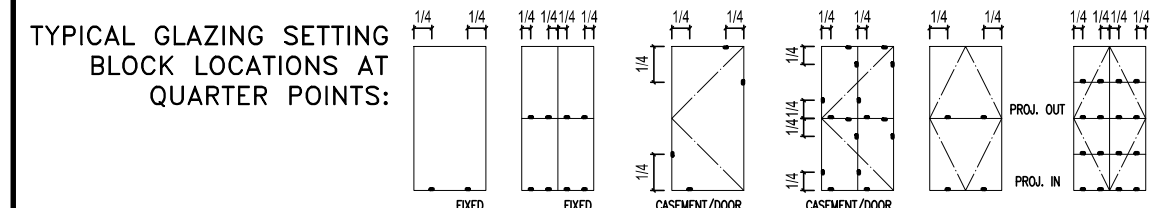
READY, SET, RENO

ON-SITE GUIDELINE UPON RECEIPT OF SHIPMENT

- 1.) VERIFY THAT THE SHIPMENT IS FOR YOUR PROJECT.
 - 2.) VISUALLY INSPECT FOR DAMAGE TO SHIPMENT.
 - 3.) INSPECT GOODS FOR SATISFACTORY PACKING ON TRANSPORT.
 - 4.) UNLOAD FROM TRANSPORT.
 - 5.) VERIFY THAT CORRECT NUMBER OF FRAMES AND PACKAGES ARE RECEIVED ACCORDING TO SHIPPING DOCUMENTS.
 - 6.) NOTE ANY DAMAGES OR SHORTAGES ON SHIPPING DOCUMENTS AND/OR SIGN "SUBJECT TO EXAMINATION".
IMPORTANT: EXAMINATION MUST TAKE PLACE AND DAMAGES OR SHORTAGES BE REPORTED IN WRITING TO THE SHIPPER WITHIN 48 HOURS OF RECEIPT OF SHIPMENT. DIGITAL PHOTOGRAPHS OF DAMAGE MUST BE INCLUDED IN REPORT FOR INSURANCE CLAIM PURPOSES. DO NOT DISCARD WRAPPING AND PACKAGING MATERIAL.
 - 7.) STORE GOODS IN A DRY AND SECURE AREA.
- ACCEPTANCE OF THE SHIPMENT WITHOUT HAVING MADE THE PROPER NOTATIONS ON THE FREIGHT BILL IS DONE SO AT YOUR OWN RISK.

RECOMMENDED INSTALLATION PROCEDURE (QUESTIONS? CONTACT 416-755-0880)

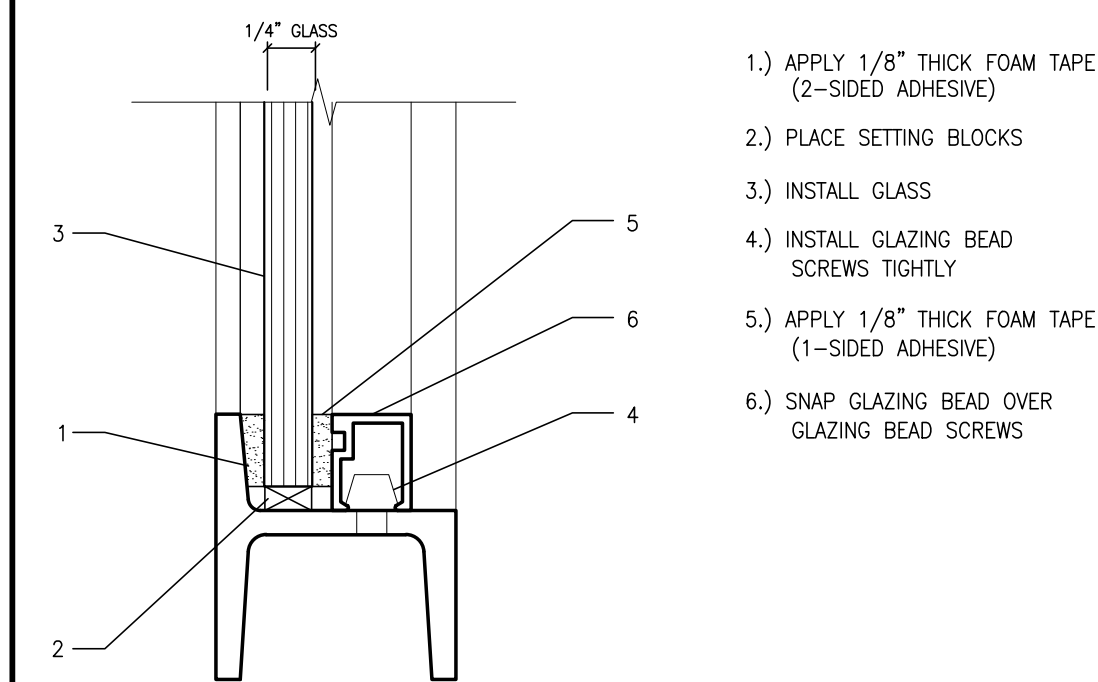
- 1.) STUDY AND BECOME FAMILIAR WITH INTENT OF APPROVED SHOP DRAWINGS.
- 2.) UNITS SHALL BE INSTALLED BY EXPERIENCED INSTALLATION PERSONNEL.
- 3.) DETERMINE CORRECT UNITS FOR EACH OPENING BY CONSULTING THESE SHOP DRAWINGS AND ARCHITECTURAL DRAWINGS.
- 4.) VERIFY OPENING SIZE AND UNIT SIZE ARE COMPATIBLE AND COMPLY WITH SIZES ON SHOP DRAWINGS.
- 5.) ESTABLISH INSTALLATION SEQUENCE OF UNITS FOR EACH OPENING.
- 6.) INSTALL UNITS ACCORDING TO METHOD SHOWN ON SHOP DRAWING.
- 7.) SET UNITS LEVEL, PLUMB, AND SQUARE. AVOID WARPING OR TWISTING OF FRAMES.
- 8.) DETERMINE CORRECT ALIGNMENT WITH ALL ADJACENT UNITS AND STRUCTURE.
- 9.) ALL FASTENING SCREWS OR BOLTS SHOULD BE USED TO ENSURE CORRECT STRENGTH OF UNIT.
- 10.) DETERMINE SATISFACTORY FIT OF ALL OPERABLE UNITS.
- 11.) INSTALL ALL OPERATING HARDWARE AND CHECK FOR SATISFACTORY FUNCTION. OPENING UNITS SHOULD OPERATE SMOOTHLY AND BE WEATHER TIGHT WHEN CLOSED.
- 12.) ENSURE WEATHERBARS HAVE BEEN INSTALLED AS PER SHOP DRAWINGS.
- 13.) SEAL EXTERIOR JOINTS BETWEEN THE FRAMES, MULLIONS, WEATHERBARS, AND SURROUNDING STRUCTURE, AND HOLES IN VENT/DOOR FRAME.
- 14.) REPAIR ANY DAMAGED FACTORY FINISH.
- 15.) DETERMINE CORRECT GLAZING BEAD FOR EACH UNIT BY CONSULTING PACKING LIST (GLAZING BEAD IS DESIGNATED BY UNIT TYPE NUMBER).
- 16.) INSTALL GLASS ACCORDING TO SUGGESTED METHOD SHOWN ON SHOP DRAWING (DO NOT GLAZE IF UNITS ARE NOT FUNCTIONING CORRECTLY).
- 17.) FINAL CLEANING IS NOT THE RESPONSIBILITY OF THE INSTALLER.



GENERAL NOTES:

- GENERAL CONTRACTOR WILL BE RESPONSIBLE FOR THE COMPLETION OF ALL NECESSARY PREPARATORY WORK "BY OTHERS" IN ORDER THAT OUR PRODUCTS MAY BE INSTALLED.
- LOCAL BUILDING CODE COMPLIANCE IS THE RESPONSIBILITY OF THE CUSTOMER.
- SURROUNDING CONDITIONS SHOWN ON SHOP DRAWINGS ARE ONLY REPRESENTATIVE. ACTUAL SITE CONDITIONS MUST BE IN ACCORDANCE WITH LOCAL BUILDING CODES AND BE OF ADEQUATE STRENGTH TO SUPPORT WEIGHT OF FRAMES AND GLASS.
- THE EXTERIOR JOINTS BETWEEN THE SASH, TRIM AND MULLIONS SHALL BE PROPERLY SEALED WATERTIGHT WITH AN APPROVED SEALANT AND NEATLY POINTED. INSTALLER SHALL SEAL ALL SCREW HEADS AND HOLES OCCURRING IN THE BOTTOM BARS OF FRAME AND ANYWHERE WATER COULD COLLECT.
- IT IS THE RESPONSIBILITY OF THE INSTALLER TO PROPERLY INSTALL NOR-AM'S PRODUCTS AND THE RESPONSIBILITY OF THE GLAZIER TO PROVIDE WEATHERTIGHT GLAZING. NOR-AM'S APPROVED SHOP DRAWINGS AND INFORMATION PROVIDED HEREIN ARE NOT SPECIFICATIONS. THE INSTALLER AND GLAZIER MUST REFER TO PROJECT DOCUMENTS FOR SPECIFICATIONS RELATING TO THEIR WORK.
- IF DOOR HARDWARE IS BEING PROVIDED BY CUSTOMER, NOR-AM MUST RECEIVE SAMPLES. TO ENSURE PROPER FIT, FUNCTION AND ALIGNMENT, NOR-AM REQUIRES ACTUAL FUNCTIONING SAMPLES OF THE HARDWARE BEING USED ON PROJECT. FAILURE TO PROVIDE SAMPLES WILL VOID DOOR WARRANTY.
- GLASS SETTING BLOCKS ARE TO BE FURNISHED BY THE GLAZIER. BLOCKS SHOULD BE PROPERLY SIZED TO SUPPORT BOTH PANES OF INSULATED UNITS. BLOCKS SHOULD BE POSITIONED AS SHOWN IN THE "GLASS SET BLOCK LOCATION" DIAGRAM. FAILURE TO LOCATE THE BLOCKS AS RECOMMENDED MAY CAUSE RACKING OF FRAMES AND AN INABILITY TO OPERATE VENTS/DOORS PROPERLY.
- FINISH VARIATION ON THE FINAL PRODUCT CAN BE EVIDENT DUE TO THE TEXTURE OF THE HOT ROLLED SECTION AND/OR THE HOT DIPPED GALVANIZE. THIS CAN INCLUDE SOME OR ALL OF THE FOLLOWING: SURFACE ROUGHNESS FROM MILL SCALE, PITTING, SECTION CONCAVITY, AND VARIOUS IMPERFECTIONS.
- KICKPANELS MUST BE USED ON ALL DOORS AS REMOVAL WILL VOID PRODUCT WARRANTY.
- HISTORIC/INDUSTRIAL SERIES IS NOT FURNISHED WITH INTEGRAL WEATHERSTRIPPING. W20 AND P4000 SERIES ARE FURNISHED WITH INTEGRAL WEATHERSTRIPPING. NOTE NOT APPLICABLE TO SKYLIGHTS.
- CONDENSATION ON THE GLASS AND/OR FRAME IS THE RESULT OF INCORRECT HUMIDITY RATIO IN THE BUILDING. CORRECT HUMIDITY LEVELS AND AIR FLOW ARE ESSENTIAL IN CONTROLLING CONDENSATION. HUMIDITY LEVELS ARE THE RESPONSIBILITY OF THE BUILDING OCCUPANT AND SHOULD BE ADJUSTED ACCORDING TO EXTERIOR TEMPERATURE. CONSULT YOUR HVAC CONTRACTOR FOR RECOMMENDED TEMPERATURE/HUMIDITY % RATIO.

W20 SERIES - INTERIOR



TYPICAL GLAZING DETAIL FOR SQUARE ALUMINUM SNAP-ON BEAD

- 1.) APPLY 1/8" THICK FOAM TAPE (2-SIDED ADHESIVE)
- 2.) PLACE SETTING BLOCKS
- 3.) INSTALL GLASS
- 4.) INSTALL GLAZING BEAD SCREWS TIGHTLY
- 5.) APPLY 1/8" THICK FOAM TAPE (1-SIDED ADHESIVE)
- 6.) SNAP GLAZING BEAD OVER GLAZING BEAD SCREWS

BELOW MUST BE SIGNED IN ORDER FOR FABRICATION TO PROCEED.
WINDOW DESIGN AND SIZES AS SHOWN ARE APPROVED AS BEING CORRECT FOR FABRICATION (SIGNED) _____

ESTIMATED SHIPPING: T.B.D.

ALL SHIPPING DATES QUOTED ARE AFTER RECEIPT OF APPROVED DRAWINGS WITH WRITTEN GUARANTEE OF SIZES OR SITE SIZES, AND ARE SUBJECT TO REVIEW AT RECEIPT OF ALL PERTINENT INFORMATION.

FABRICATION CAN NOT COMMENCE WITHOUT THE FOLLOWING REQUIREMENTS BEING FULFILLED:

PLEASE CAREFULLY CHECK ALL DRAWINGS FOR CORRECT QUANTITIES, SIZES, LIGHT ARRANGEMENT AND DETAILS.
RETURN 1 COPY MARKED "APPROVED", SIGNED AND DATED. IF OTHER INSTRUCTIONS ARE REQUIRED PLEASE INDICATE IN WRITING ON THE DRAWINGS (PREFERRED) OR WITH A COVER LETTER.

INFORMATION REQUIRED PRIOR TO FABRICATION:

FABRICATION SIZES	REQUIRED: <input checked="" type="checkbox"/>	REC'D: <input type="checkbox"/>
PAINT COLOUR	REQUIRED: <input type="checkbox"/>	REC'D: <input checked="" type="checkbox"/>
HARDWARE FINISH	REQUIRED: <input type="checkbox"/>	REC'D: <input checked="" type="checkbox"/>

NOTES:

CLIENT REVISIONS

ANY ALTERATIONS TO THE SUBMITTED ELEVATIONS AND/OR DETAILS MAY RESULT IN PRICING AMENDMENTS

REVISIONS

No.	REVISION	INITIAL	DATE
△ -		--	-/-/-

GENERAL SPECIFICATIONS

INSTALLATION BY: BLISS NOR-AM

GLASS: 1/4" TEMPERED, "OPAQUE" ACID-ETCHED GLASS

GLAZING MATERIAL BY: BLISS NOR-AM

GLAZING BY: BLISS NOR-AM

CAULKING: DOW CORNING CWS-STANDARD BLACK

CAULKING BY: BLISS NOR-AM

FINISH: BAKED ON ENAMEL - DURACRON K90212 "FLAT BLACK"

HARDWARE: PLEASE SEE LISTS UNDER EACH ELEVATION

BLISS NOR-AM
DOORS & WINDOWS LTD.

30 NORTH WIND PLACE, TORONTO, ON M1S 3R5
Tel: 416-755-0880 Fax: 416-755-3259
Email: email@blissnoram.com Website: www.blissnoram.com

W20 SERIES

PROJECT: READY, SET, RENO

LOCATION:

ORDERED BY: READY, SET, RENO

ARCHITECT: -

DRAWN BY: H. JONES

DATE: NOVEMBER 15, 2023

CHECKED BY: IM

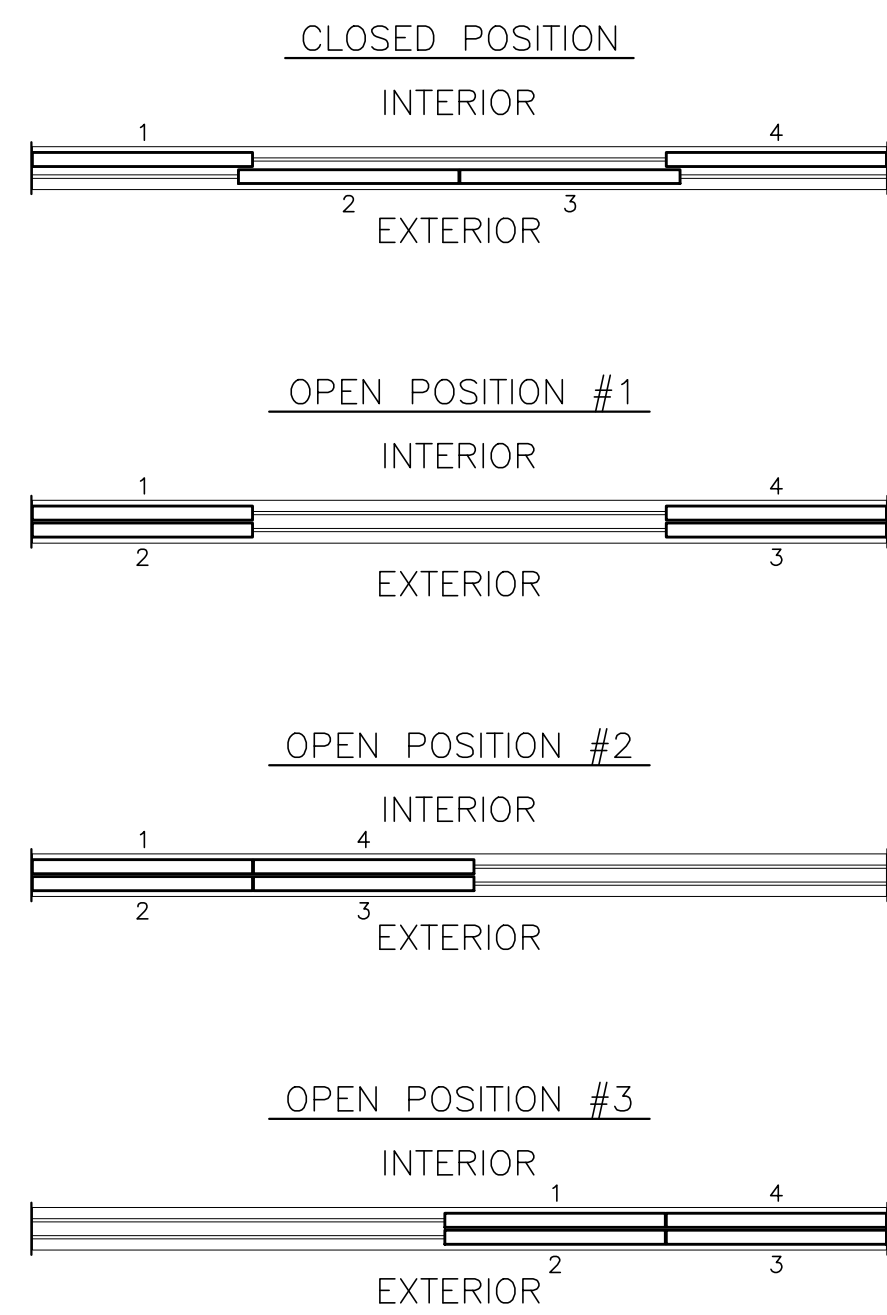
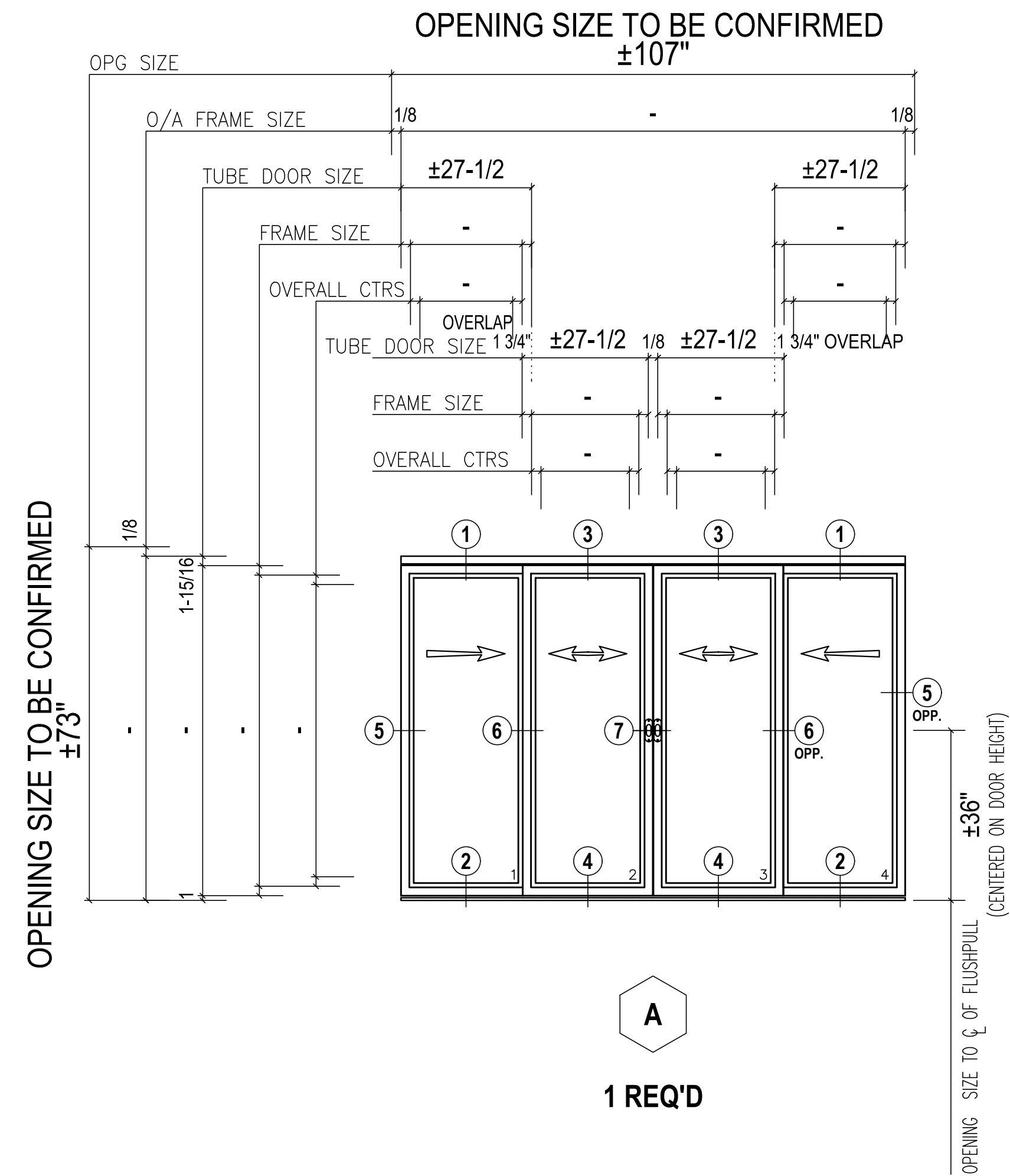
-- --

COVER SHEET

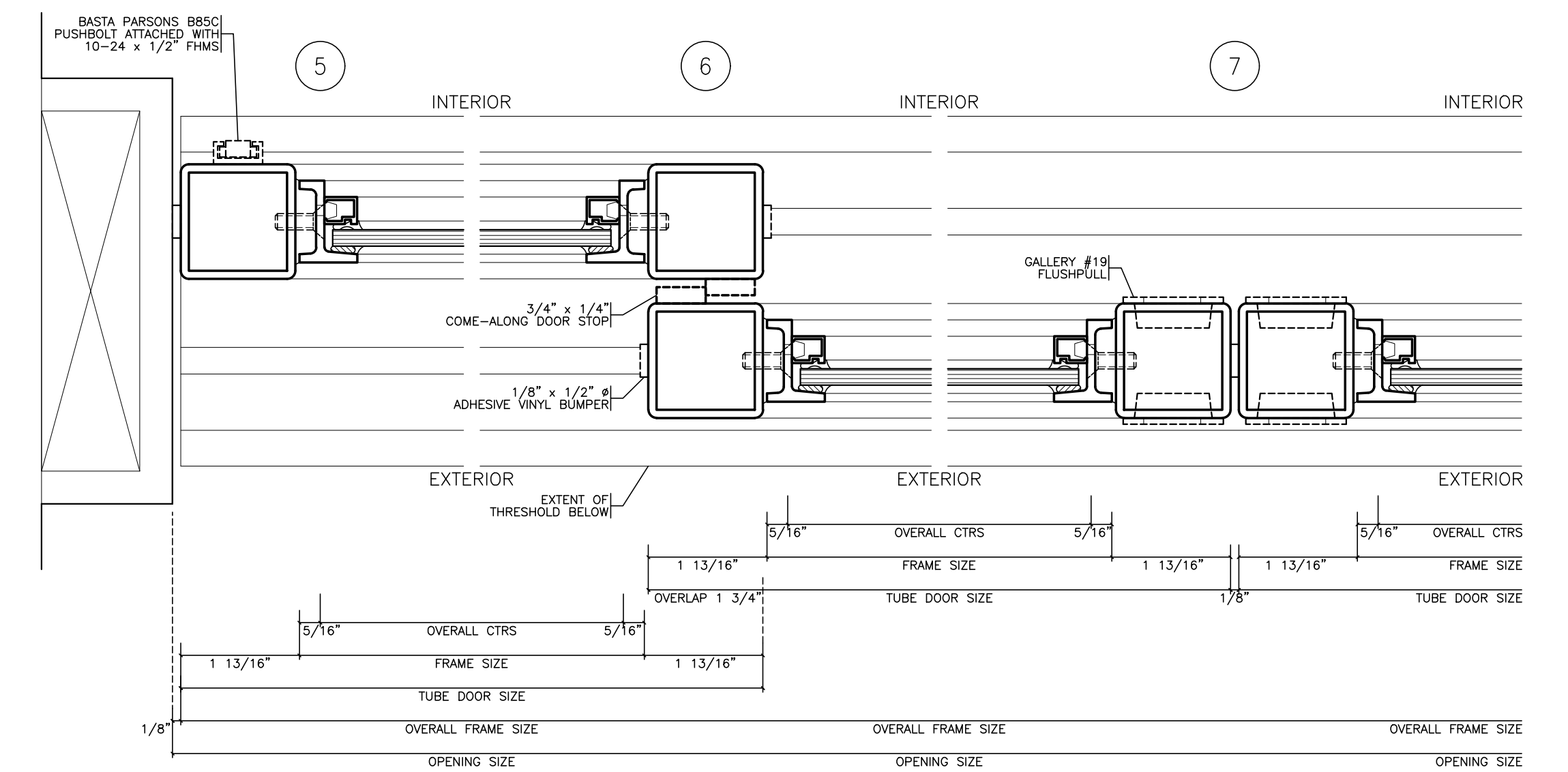
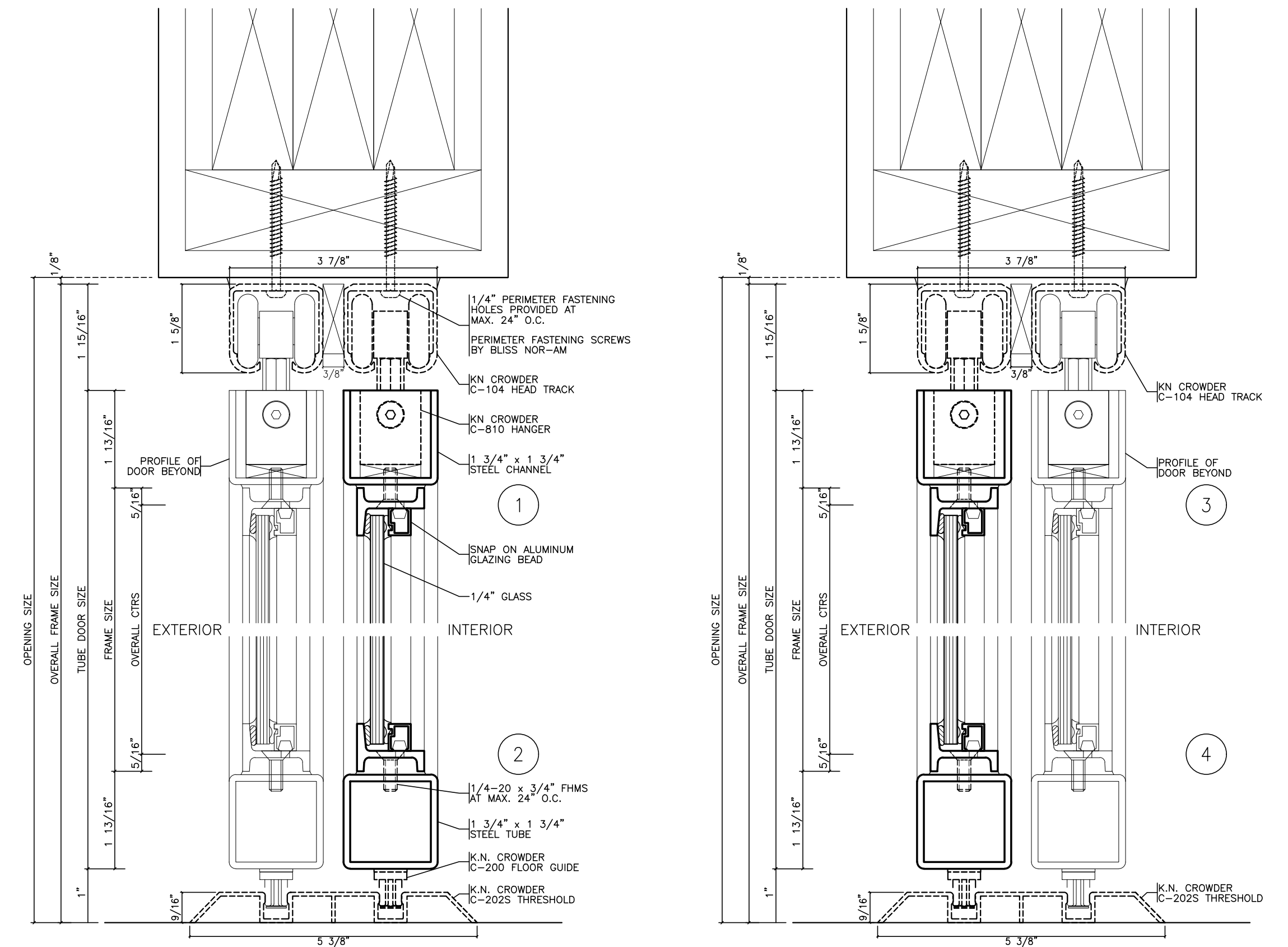
SHEET: 1 OF 2

DRAWING NUMBER 7810-1

ELEVATIONS ARE VIEWED FROM THE EXTERIOR



DOOR HARDWARE		
4-PANEL SLIDING	2 KN CROWDER C-104 HEAD TRACK	BLACK ANODIZED
TYPE: A	4 KN CROWDER C-100HD IN-TRACK STOP	N/A
	8 KN CROWDER C-810 HANGER	N/A
	1 KN CROWDER C-202S SILL TRACK	CLEAR ANODIZED
	8 KN CROWDER C-200 DOOR GUIDE	N/A
	4 GALLERY #19 FLUSH PULLS	US19 FLAT BLACK
	2 BASTA PARSONS BB5C6" PUSHBOLT	BLACK FINISH
	18 1/8" x 1/2" DIAM. ADHESIVE VINYL BUMPER	CLEAR



READY, SET, RENO	
SCALE: 1/2"=1'-0" & 6"=1'-0"	DRAWN BY: H. JONES
DATE: NOVEMBER 15, 2023	REVISED: -
ELEVATION & DETAILS	
2 OF 2	DRAWING NUMBER 7810-2